

An aerial view of a city's 3D point cloud map. The map uses a color gradient where blue represents lower elevations and red/yellow represents higher elevations. The terrain is highly detailed, showing individual buildings, trees, and roads. The background is a dark, almost black, sky.

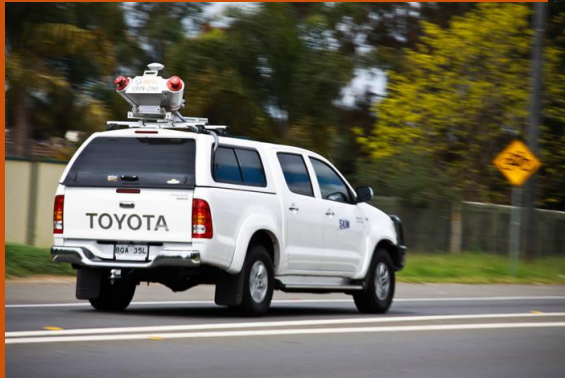
Everything 3D Mapping



*Image & Mapping Forum
San Diego, 2016*

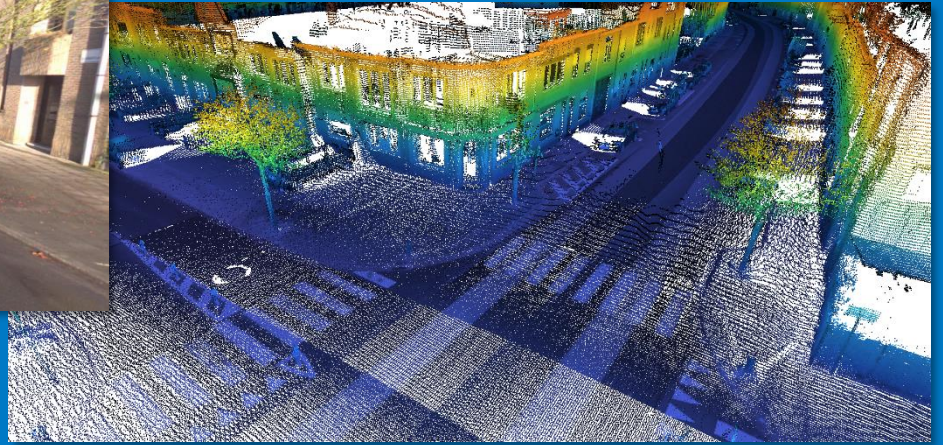
https://www.youtube.com/watch?v=2_iTeUIWBg4

Mobile Mapping brings the full representation of 3D reality onto the desktop, using sensors mounted on a mobile vehicle (car, train, boat, bike, uav, even a person).

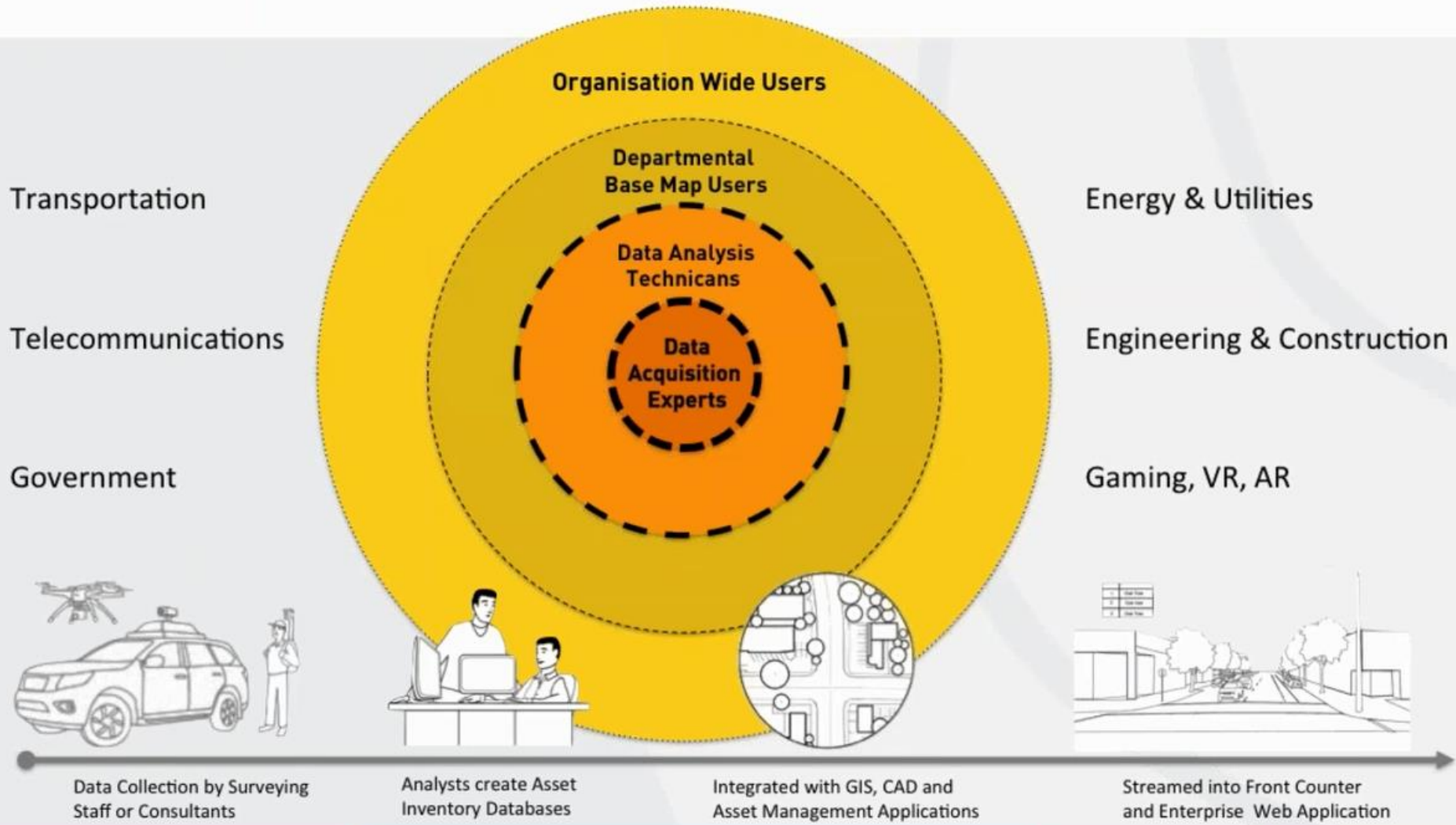


<https://www.youtube.com/watch?v=BdAdGuEjvS8>

Result : Full 3D View in 360° imagery and LiDAR



with exact positioning and measurement capabilities



What can we do with it ?

- Reduces field trips
- Extraction of road infrastructure and land property
- Inventory of assets, update of cadastral information
- Visuals checking and judgement in GIS
- Analysis for Road, Rail, Telco
- Update of city maps
- 3D Analysis
- And much more

<https://www.youtube.com/watch?v=YIJS7XW4vls>

Legend

- Quality
- Coloring
- RGB
- Elevation style
- Altitude



<https://www.youtube.com/watch?v=PH6bCfMSfiw>



- States, Nations, Cities
- Private Enterprises



<https://www.youtube.com/watch?v=VJxBuEsuho4>

THANK YOU

Lomme Devriendt
Orbit GT
www.orbitgt.com