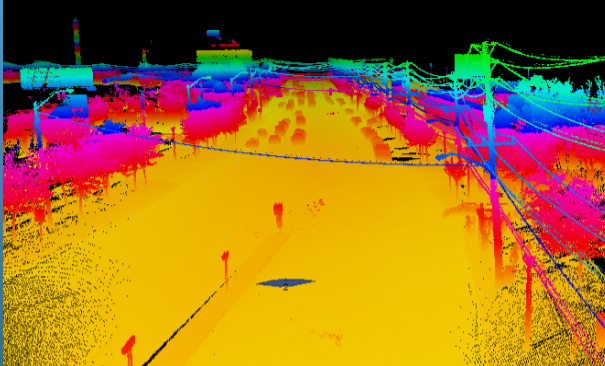


Orbit 3D Mapping Version 17.0 Portfolio Changes

October 2016
For Orbit GT Resellers Only

INTRODUCTION



Version 17 Portfolio

4 Main Product Offerings

- Content Manager
 - ▶ single desktop product
- Feature Extraction
 - ▶ 3 desktop products + C/S
- **3D Mapping Cloud**
 - ▶ everything online
- Publisher
 - ▶ on premises publisher

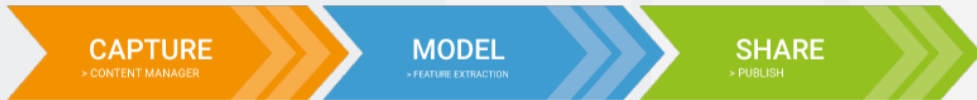
tool for data collectors, system owners
manipulates imagery, point cloud

tool to extract points, lines, areas
clash detection, profile, volume, blur
adds (semi-)automated extraction

next generation web app to store, share,
fuse publish content

on premises only - web & integrate

The Life of Mobile Mapping data



- **Collect & Prepare Import**
- **Catalog / Explore**
- **Verify**
- **Correct Positional Accuracy**
- **Clean Point Cloud**
- **Plan re-runs**
- **Deliver MM Content**
- **Upload to the Cloud**

- **Extract Features**
- **Asset Inventory Workflows**
- **Automated Extraction tools**
- **Clash Detection**
- **Profiles & Cross Sections**
- **Volumes**
- **Face & Plate Blurring QC**
- **Deliver Features**

- **Share in the Cloud**
- **Consume via Web**
- **Consume via App**
- **Consume via SDK**
- **Plugins / Integrations**
- **Embed in Workflow**
- **Share with 3rd parties**
- **Integrate with other 3D data**
- **Publish On-Premises**

Who does what ?

	<i>CAPTURE</i> > CONTENT MANAGER	<i>MODEL</i> > FEATURE EXTRACTION	<i>SHARE</i> > PUBLISH
MM SYSTEM OWNER	✓	✓	
SERVICE PROVIDER	✓	✓	✓
END USER		✓	✓

Version 17 - General Highlights

- Top New Features :
 - ▶ Ghost Cleaning
 - ▶ Post Capture Alignment
 - ▶ Image Only measurements using reference planes
 - ▶ Parallel Extraction
 - ▶ Fully integrated Slice Viewing
 - ▶ Automated Object Detection (Ridge, Road Markings, Catenary, Rails, ...)

Version 17 - General Highlights

● Overall Usability

- ▶ Simplified User Interface, Improved User Feedback, Improved Navigation, Fast Production Keystrokes

● Resources and CRS

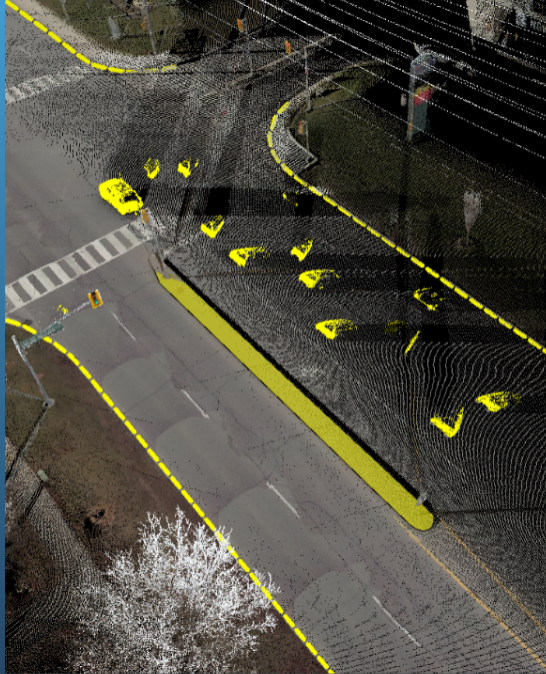
- ▶ Enhanced support for WMS and WMTS
- ▶ Charset and Code page definition for Dataset Structure
- ▶ Inverse Coordinate System Axis,
- ▶ Orthometric height EGM2008 & NOAA GEOID12B
- ▶ Dynamic Transformation between Ft and Metric projected CRS

● Various Enhancements

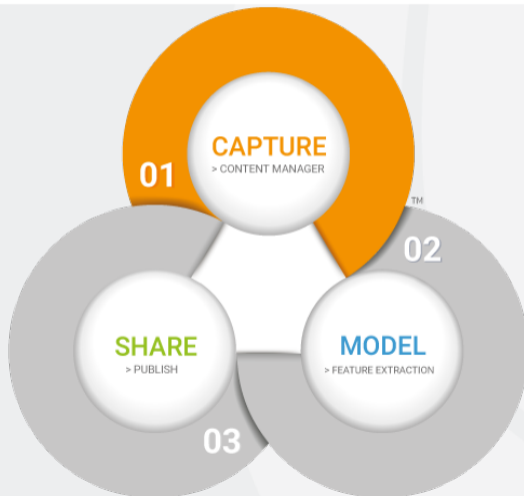
- ▶ 360 deg spherical movie generation (VR!)
- ▶ Optimized 3D Hover Settings
- ▶ 3D Snapping to Objects and Measurements
- ▶ Extend Line measurements
- ▶ Supplementary Attribute formulas
- ▶ Combine Map 3D, Mobile Mapping and Slice Views in a single Measurement
- ▶ Countless enhancements, from simple gestures to re-arranged panels and menus
- ▶ All user feedback bug fixes and more

CONTENT MANAGER

FOR
MOBILE MAPPING DATA COLLECTORS



The Life of Mobile Mapping data



Content Manager product

New tools

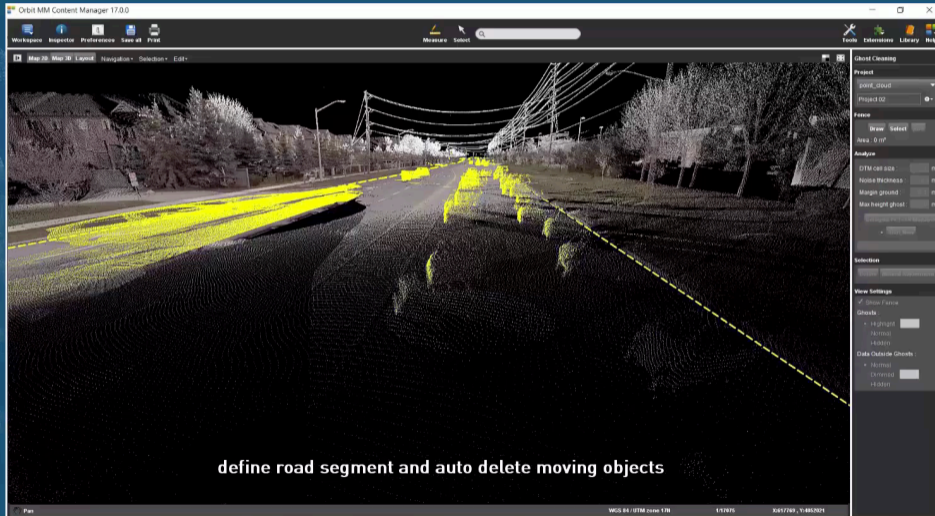
- Import
 - ▶ **Added capabilities**
- Explore
 - ▶ **Slice View**
- Verify
 - ▶ **Post Capture Alignment**
- Adjust
 - ▶ **Auto Clean Point Cloud**
- Deliver
 - ▶ **To the Cloud (v17.1)**



ORBIT MOBILE MAPPING - CONTENT MANAGER

Import - Explore - Verify - Adjust - Deliver

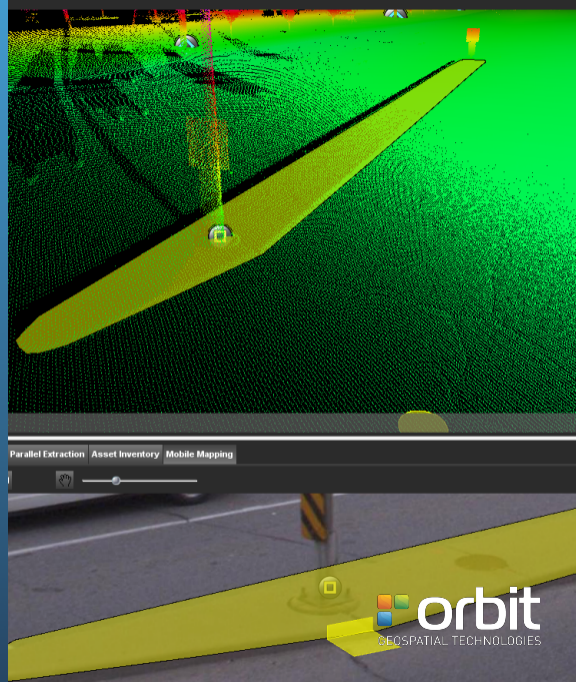
Manage Mobile Mapping data
after Capture



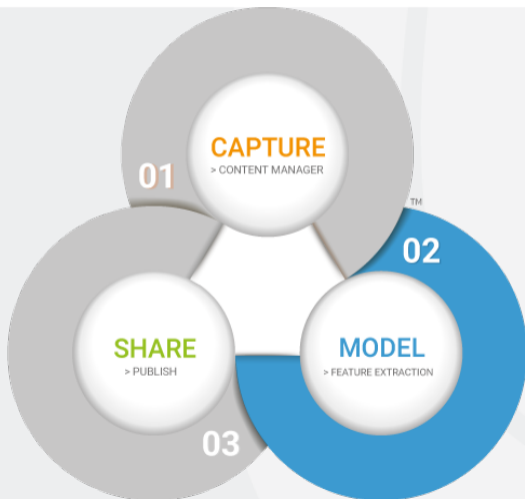
define road segment and auto delete moving objects

FEATURE EXTRACTION

FOR
DATA PRODUCTION, ANALYSIS,
OPERATIONAL WORKFLOWS



The Life of Mobile Mapping data



Change of Product Names

3 Products in v11

Feature Extraction Basic



Asset Inventory Bundle



Full Bundle



3 Products in v17

Feature Extraction Basic

Feature Extraction Standard

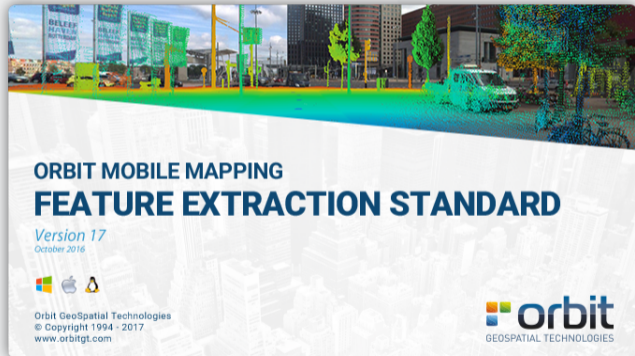
Feature Extraction Pro

Product are not changed regarding their core differences. Capabilities are improved and added.

Feature Extraction products

New Features in Workflow

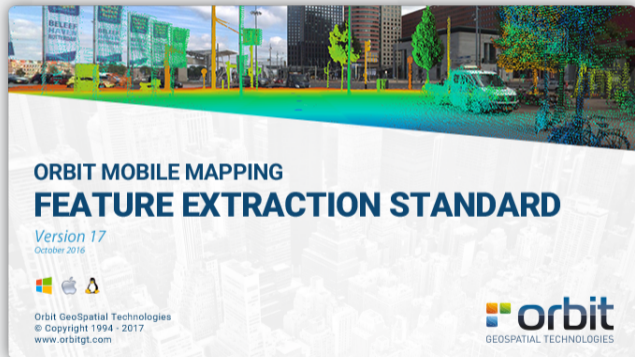
- Import
 - ▶ **Added capabilities**
- Explore
 - ▶ **Slice View, Synced Views, Hover**
- Measure and Extract
 - ▶ **Semi-Automated Extraction**
- Produce & Analyse
- Deliver



Feature Extraction products

Product Updates

- Feature Extraction Basic
- Feature Extraction Standard
 - ▶ **Semi-Automated Extraction**
 - ▶ **Parallel Extraction**
- Feature Extraction Pro
 - ▶ **Semi-Automated Extraction**
 - ▶ **Parallel Extraction**
- Blur & Erase
 - ▶ **New Production version**



Semi-Automated Feature Extraction

New tools in Standard and Pro

- Various tools included
 - ▶ Auto-Hover feedback
 - ▶ Ridge Detection
 - ▶ Curbs Detection
 - ▶ Catenary Detection
 - ▶ Road Markings Detection
 - ▶ Rails Detection
- Parallel Extraction
- Image Only measurements
 - ▶ Use overlays as vertical planes
 - ▶ Use estimated Ground
- Slice View
 - ▶ Intuitive combination with 2D, 3D views
 - ▶ Continue measurement in other view

Blur & Erase

New Production tool

1. Detect, Annotate and Process

- **Detection Service**
 - ▶ Faces & Plates detection
 - ▶ Annotates Areas of Interest in Metadata
- **Blur & Erase Production**
 - ▶ Speed up annotation of Areas of Interest
 - ▶ Simplified manual mass editing

2. QC, Adjust by User Feedback

- **Blur & Erase QC**
 - ▶ Simulate
 - ▶ Process Imagery
 - ▶ Receive user feedback
 - ▶ Adjust and (Re)-Deliver to Publisher/Cloud

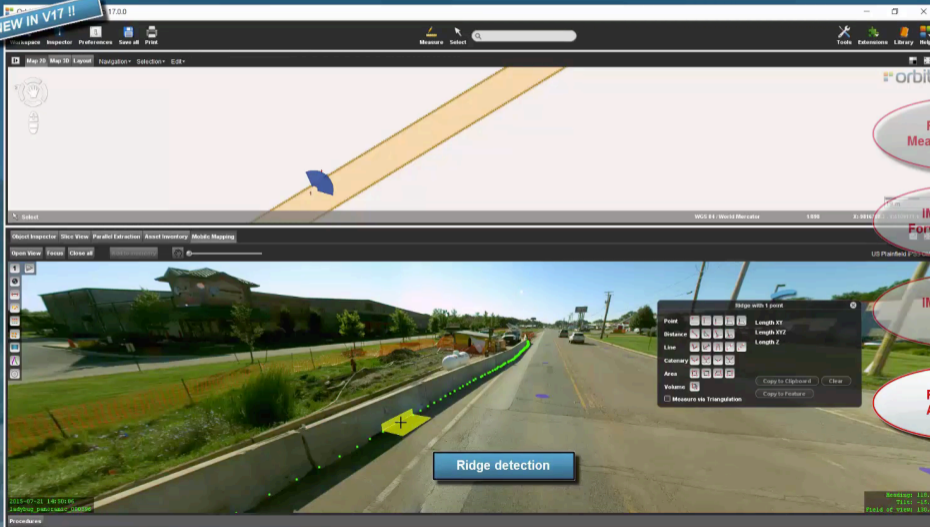
ORBIT MOBILE MAPPING - FEATURE EXTRACTION

Import - Explore - Measure & Extract - Produce & Analyse - Deliver

Advanced Feature Extraction
for the Professional



NEW IN V17 !!



ORBIT MOBILE MAPPING - FEATURE EXTRACTION

Import - Explore - Measure & Extract - Produce & Analyse - Deliver

Advanced Feature Extraction
for the Professional



PARALLEL AUTO-EXTRACTION

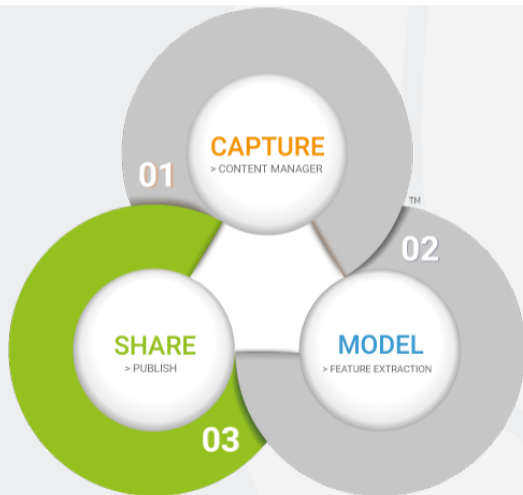
The screenshot displays the Orbit Mobile Mapping software interface. At the top, a navigation bar includes 'Workspace', 'Inspector', 'Preferences', 'Save all', and 'Print'. Below this is a toolbar with 'Measure' and 'Select' tools. The main map area shows an aerial view of a road with a yellow profile line and a blue arrow indicating direction. A callout box points to this area with the text 'Define profile and direction'. Below the map is a control panel with tabs for 'Report Inspector', 'Task Manager', 'Slice View', 'Catalog', 'Clipboard', 'Trajectory Graph', 'Parallel Extraction', 'Asset Inventory', and 'Mobile Mapping'. The 'Parallel Extraction' tab is active, showing a 'New Set' button and a 'Thickness' slider set to '10 cm'. A playback control bar is visible, with a play button circled in blue. The main display area shows a point cloud with two callout boxes: one on the left with a blue square and points, and one on the right with a green square and points. A callout box at the bottom left points to the left callout with the text 'Draw points of interest (vertices)'. The 'Processors' section is visible at the bottom of the interface.

PUBLISHER

FOR SHARING OF MOBILE MAPPING DATA



The Life of Mobile Mapping data



Publisher products

Overview

- Configure - Publish - Plugins - SDK
- Standard Publisher now for *On Premises* only.
- Only 1 Price List
- Major Update planned for Q1/Q2 2017 (v17.1)
 - ▶ HTML 5 viewer
 - ▶ Compatible with Cloud



ORBIT MOBILE MAPPING - PUBLISHER

Configure - Publish - Plugins - SDK

Share Online without Limits



Orbit MM Plugin for Autocad

Measure (points, lines, areas) based on 3D pointcloud or images only

Save measurements and copy to the AutoCAD Map layers

Property	Value
Position	
Distance	
Line	
Area	
Volume	
Height	6.165 m
Distance XYZ	8.359 m
Distance XY	5.645 m
Slope	-73.7 %

6.359 m, 8.359 m, 5.645 m

orbit

UAS Mapping
Oblique Mapping
Indoor Mapping

UAS Mapping v17

Feature Extraction

- Redesigned to support port-processed data
 - ▶ Pix4D
 - ▶ AgiSoft
 - ▶ Generic Import
- Feature Extraction and Analysis tools
 - ▶ Measure and Register
 - ▶ Clash Detection
 - ▶ Volumetric Analysis
 - ▶ Profiles & Cross Sections

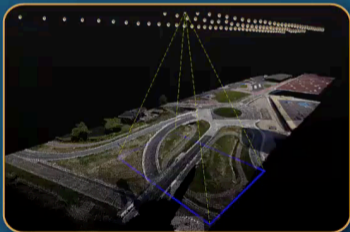


ORBIT UAS MAPPING - FEATURE EXTRACTION

Import - Explore - Verify - Measure & Extract - Produce & Analyse - Deliver

Going beyond the Point Cloud

Advanced Feature Extraction for UAS Mapping



Import

- easy-to-use procedure to import processed UAS data
- imagery and/or LiDAR data
- direct import templates for Agisoft, Pix4D, RiPrecision UAV, ...

Explore

- 2D and 3D view, slice and original image display
- combine UAS data with reference GIS data
- and add any other LiDAR resource

Verify

- measure ground control points to verify absolute accuracy

Measure & Extract

- points, lines, catenary curves, areas
- ridge, edge and corner detection
- point cloud or forward intersection on imagery

Produce & Analyse

- asset inventory workflow, parallel auto-extraction**
- profiles & cross sections, contours, volumes, clash detection**

Deliver

- deliver extracted features for 3rd party software (GIS/CAD)
- export snapshots, fly-through movie, results
- upload to 3D Mapping Cloud

Oblique Mapping

- Desktop Upgrade
 - ▶ Bug Fixes
 - ▶ Nadir Image Support
 - ▶ Camera Choice Support

- Publisher Upgrade
 - ▶ Bug Fixes
 - ▶ Minor upgrade



Indoor Mapping

First product of New Portfolio

- New Desktop Product
- Support Post processed data from
 - ▶ TIMMS
 - ▶ NavVis
 - ▶ Viametris
 - ▶ Leica Backpack
 - ▶ Vexcel Panther
 - ▶ Generic import
- Desktop Feature Extraction
 - ▶ Floor Plan Builder
 - ▶ Profiles, Clash Detection
 - ▶ Asset Inventory



Availability

Availability Version 17

- Available Today
 - ▶ MM Content Manager
 - ▶ MM Feature Extraction Basic
 - ▶ MM Feature Extraction Standard
 - ▶ UAS Mapping
- Week Nov 28th
 - ▶ MM Explorer
 - ▶ MM Feature Extraction Pro
 - ▶ MM Publisher
- Week Dec 5th
 - ▶ Oblique Desktop
 - ▶ Oblique Publisher
 - ▶ MM Blur & Erase
- Week Dec 12th
 - ▶ Indoor Mapping
- Plugins :
 - ▶ No update required !

Future Release Plans

- Regular Yearly Releases
- Main Version : October - November
- Update : April

Sales Models and Reseller Agreement

Sales Models Update

- Standard Sales remain unchanged
 - ▶ Fixed Purchase Price
 - ▶ Maintenance at 15%
 - ▶ Support via Service Tickets
- Product Related
 - ▶ Major Simplification of Publisher options
- **Subscription model is cancelled**
 - ▶ continue to support existing contracts until expiry
 - ▶ Subscription models to migrate to the Cloud

Reseller Agreement update

Why bother ? Well, it's good for you !

- Major Items

- ▶ Cloud Selling (see next webinar)
- ▶ Service Tickets Selling

From now on **10% on Service Tickets !**

- Minor items

- ▶ Clearer definitions
- ▶ Better protection clauses
- ▶ Improved transparency
- ▶ Reorganised structure

- How to proceed ?

- ▶ If your credentials haven't changed, just let us know and we'll handle it.
- ▶ If they did change (address, responsible person), let us know the changes and we'll handle it.

- Any Pitfalls ?

- ▶ No. There are no supplementary tasks or requirements from your side. There are no different fees or conditions, except the extra Cloud & Service Tickets %

Reseller Trainings planning

- 3 Sessions Planned
 - 3 Days @ OGT
 - Upgrade Trainings
 - First come, first served
 - Max 8 persons in total

 - *Useful for Newbies*

 - ***Required for Gold Resellers, every 2 years***
- **Mark these dates today**
 - ▶ Jan 31 - Feb 2
 - ▶ May 9 - May 11
 - ▶ Nov 28 - Nov 30

Thank You

More info : www.orbitgt.com

© Orbit GT, 2016