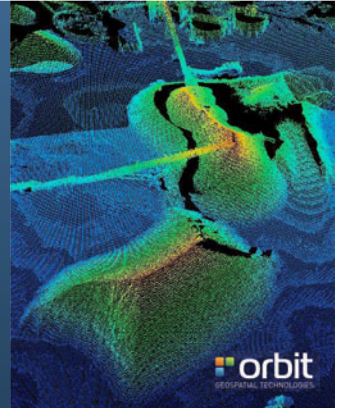


Orbit Mobile Mapping Version 11.2 Portfolio

November 2015



INTRODUCTION



Version 11 Portfolio

3 Main Product Offerings



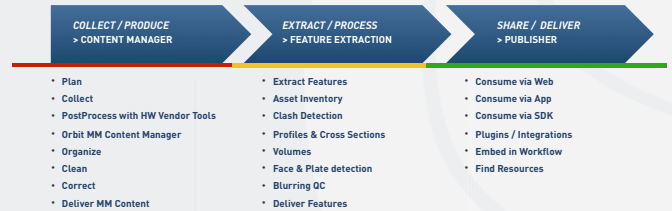
- Content Manager**
 - ▶ single desktop product
- Feature Extraction**
 - ▶ series of desktop products
- Publisher**
 - ▶ web, mobile and integrated

tool for data collectors, system owners
manipulates imagery, pointcloud

tool to extract points, lines, areas
clash detection, profile, volume, blur

tool to share online & integrate

The Life of Mobile Mapping data

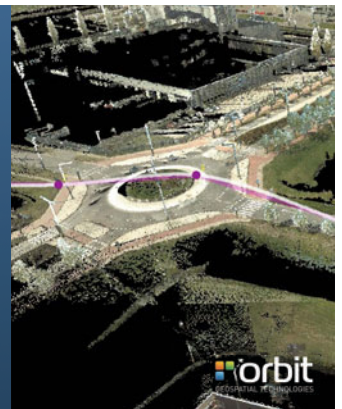


Who does what ?



	COLLECT / PRODUCE ▶ CONTENT MANAGER	EXTRACT / PROCESS ▶ FEATURE EXTRACTION	SHARE / DELIVER ▶ PUBLISHER
MM SYSTEM OWNER	✓	✓	
SERVICE PROVIDER		✓	✓
END USER		✓	✓

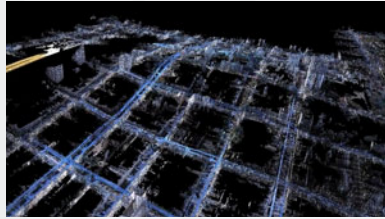
A COUPLE OF CHALLENGES COVERED BY ALL ORBIT MM PRODUCTS



Huge Volumes

Just a small example

- Imagery
 - LB5 - 30Mpx - 6MB / im
- Point Cloud
 - 500K p/sec - 10B / pt
- Single collection, 1 hour
 - 40 mi @ 40 mph
 - 1800 bil. points - 18 GB
 - 12.8 K images - 76.8 GB
- Makes 94 GB per hour, about 0.75 TB a day



Performance

Just to give a general idea

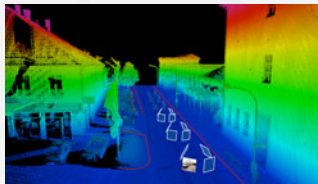
- Imagery
 - 30Mpx images, in memory = 240 MB RAM
- Point Cloud
 - 100 m stretch = about 28 MB RAM
- Network
 - 100 Mbit/sec
- Makes Loading time = 2.72 sec (excluding disc performance)



Visualization & Navigation

- Imagery
 - Spherical
 - Planar
 - Any resolution, multiresolution
- Point Cloud
 - any density
 - Clip / Select / Extract
 - TIN / DEM
- Navigation
 - all movements with single mouse fn
 - streamed loading of points with LOD

- Visualization
 - Colored by RGB, Intensity, Height, Depth or Combined views
 - LiDAR-over-Image



Orbit Solutions

- Optimized Storage
 - ▶ Minimum Server-Side processing required
- High Bandwidth solutions
 - ▶ Stand-Alone desktop
 - ▶ Client-Server desktop
- Low Bandwidth solutions
 - ▶ Publisher
- Single Storage, maximum use



CONTENT MANAGER

FOR
MOBILE MAPPING DATA COLLECTORS



The Life of Mobile Mapping data

COLLECT / PRODUCE
→ CONTENT MANAGER

EXTRACT / PROCESS
→ FEATURE EXTRACTION

SHARE / DELIVER
→ PUBLISHER

Content Manager product



Overview

- Import
- Catalog
- Clean Point Cloud
- Check GCPoints
- Trajectory Adjustment
- Remove multiple passes
- Consolidate and Deliver

- Single Desktop product, available in
 - ▶ stand-alone only

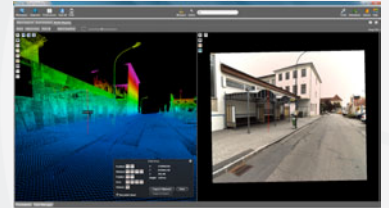


Content Manager - Import



Manage the Massive Volumes

- Import
 - ▶ Vehicle-based configuration template
 - ▶ Optimization & indexing
 - ▶ Spherical & Planar Imagery
 - ▶ Any Pointcloud size
 - ▶ Camera Calibration
- All hardware setups supported
- Collect Metadata
 - ▶ Timestamped Trajectory
 - ▶ Coverage / Envelope

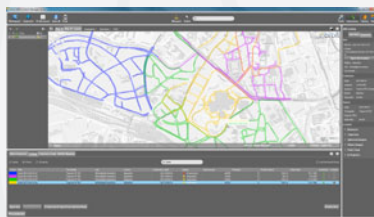


Content Manager - Organize



Keep track of your data

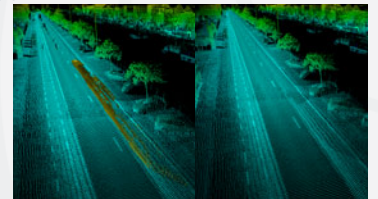
- Catalog of Runs
 - ▶ Select and Inspect
 - ▶ Status
 - ▶ Open for editing
 - ▶ Find and remove multiple passes
 - ▶ Manage Metadata
 - ▶ Archive
- Combine to Projects
- Search
- Overview Map Display



Content Manager - Point Cloud Cleaning



- Eliminate unwanted portions of points, due to e.g. moving objects
- Fast Selection tools
 - ▶ merge
 - ▶ subtract
 - ▶ auto-remove ground
- Highlight / Dim / Hide
- Dynamic Deletion of Selections
- Huge Volumes, 1 file.



Content Manager - Positional Accuracy



Check and set Constraints

- Load & List GCPoints
- Visualize
 - ▶ on map
 - ▶ on imagery
 - ▶ in pointcloud
- Measure differences in any view
 - ▶ accept as constraints
- Check with any reference and MM data
- Report

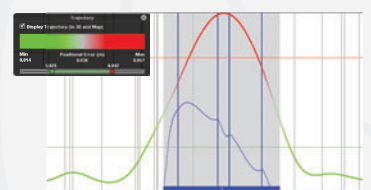


Content Manager - Trajectory Adjustment



Correct Positional Accuracy

- Interpretation & Judgement
 - ▶ Display GPS Error over time
 - ▶ Graph representation
 - ▶ Measure and Display Constraints
- Adjust or Remove Trajectory
 - ▶ Select part to Adjust or Remove
 - ▶ Preview and Process Adjustment
 - ▶ Do Multiple Stretches
 - ▶ Remove Multiple Passes

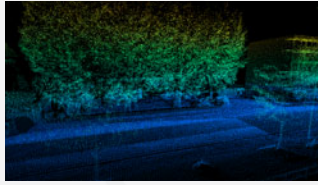


Content Manager - Consolidate



Get ready for next phase, feature extraction

- Reprocess Runs & Projects
 - cleaned pointcloud
 - corrected trajectory
 - removed multiple passes
- Stores as clean and new run
- Delivery :
 - Combine (portions of) runs / project into a single "delivery run"



Content Manager - Extra Tools



- Task Manager Utility
 - ▶ List Jobs To Do
 - ▶ Select and Process at night
 - ▶ Review
- Export
- Movie Maker



FEATURE EXTRACTION

FOR
DATA PRODUCTION, ANALYSIS,
OPERATIONAL WORKFLOWS



The Life of Mobile Mapping data



Feature Extraction products



Overview

- Feature Extraction Basic
- Asset Inventory Bundle
 - ▶ adds Asset Inventory workflows
- Feature Extraction Bundle
 - ▶ adds Clash Detection, Profiles & Cross Sections, Volumetric Analysis
- Blur & Erase
- Desktop products, available in
 - ▶ stand-alone [all]
 - ▶ client-server [Asset Inventory Bundle only]



Feature Extraction - Basic Edition



Entry level - manual extraction - get started

- Entry Level
- Open Runs & Projects
- Simple Measurement Procedures
- Measure in Image, Point Cloud
- Measure Point, Line, Area
 - ▶ Display in CRS, WGS84, Lat/Lon
 - ▶ Display Slope, Height, ...
- Manual Attribution to any dataset

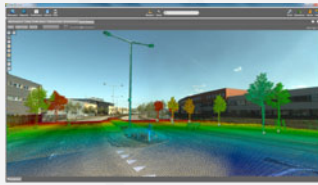


Feature Extraction - Asset Inventory



Advanced Workflow Asset Extraction & Storage

- Use Workflows
- Design Themes
- Share data
- Store in Database
- Add Snapshots, documents, attributes
- Additional Measurement functions

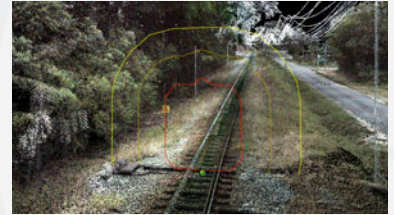


Feature Extraction - Clash Detection



Clash Detection & Clearance Measurements

- Any 3D Path
 - supports railroad slant
- Any Form
- Autodetect Hits
 - register Near-Hits, Watch list
- Report
- Judge & Act

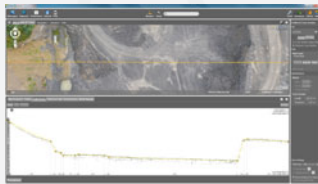


Feature Extraction - Profiles



Automated Cross Sections & Reusable Profiles

- Various Profiles
 - ▶ Path with Cross Sections
 - ▶ Single Profile
 - ▶ Set Profile length & width
- Isometric View
- Register Themes
 - ▶ Integrated with Asset Inventory
- Register Tech Profile
- Delivery

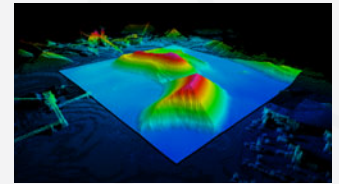


Feature Extraction - Volumetric Analysis



Any Volume and Volume Comparison

- Use any 3D Datasource
- Set Fence as perimeter
- Use Reference Data
 - To Compare
- Calculate Cut & Fill
- Delivery
 - Creates DEM / TIN
 - Creates Shape files, attributes
 - Creates Contour Lines



Blur & Erase



QA and QC Blur & Erase areas, update & deliver

- Detection Service
 - ▶ Faces & Plates detection
 - ▶ registers areas of interest in Metadata
- Blur & Erase Editor
 - ▶ Simulate
 - ▶ Process Imagery
 - ▶ Deliver



Production teams



Maximize production with central data storage in Client-Server setup

- | | |
|--|--|
| <ul style="list-style-type: none"> ■ Stand-Alone <ul style="list-style-type: none"> ▶ All products available ▶ Manual Mgmt of data | <ul style="list-style-type: none"> ■ Client-Server <ul style="list-style-type: none"> ▶ Only Asset Inventory Bundle ▶ Central Management of Mobile Mapping data <ul style="list-style-type: none"> ■ Users & Permissions ■ Workspaces ■ Asset Inventory Database |
|--|--|

Bundled products

Asset Inventory and Feature Extraction bundles



- Asset Inventory bundle includes:
 - Feature Extraction basic
 - Asset Inventory
- Feature Extraction bundle includes:
 - Feature Extraction basic
 - Asset Inventory
 - Clash Detection
 - Profiles
 - Volumes, Contour Lines

Bundled products (2)

Full Office bundle



- Full Office bundle includes:
 - Content Manager
 - Feature Extraction bundle



Orbit MM Explorer

Desktop Content Viewer tool



- Views all imported MM data
- Same engine and GUI
 - Easy to use
 - All visualisation options
 - All measure tools
- No registration / extraction / editing
- Tool to ship with **prepared** content

- Single Desktop product, available in stand-alone only



Orbit MM Blur & Erase

Desktop Editing, QC and Processing

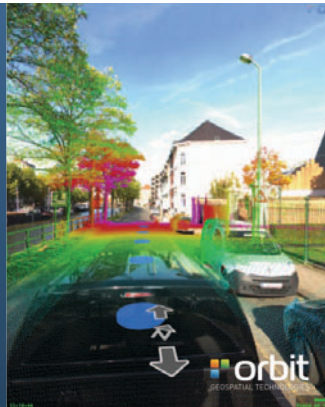


- Accesses all data
- Allows to identify areas of interest
- Update and Process Imagery

- Single Desktop product, available in stand-alone only

PUBLISHER

FOR SHARING OF MOBILE MAPPING DATA



The Life of Mobile Mapping data



COLLECT / PRODUCE
> CONTENT MANAGER

EXTRACT / PROCESS
> FEATURE EXTRACTION

SHARE / DELIVER
> PUBLISHER

Publisher products



Overview

- Mobile Mapping Publisher
 - includes Browser Publishing
- iOS App
- SDK with 3 API's
- Plugins for
 - Esri ArcGIS for Desktop
 - Esri ArcServer using GeoCortex
 - Esri ArcOnline (App)
 - AutoDesk AutoCAD Map
 - Integrgraph GeoMedia
 - Bentley MicroStation
 - QGIS, ...

Mobile Mapping Publisher



Publisher Features

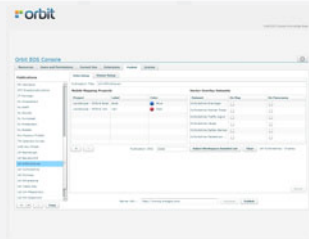
- Main Features :
 - Unlimited Image & LiDAR data
 - Manage Projects & Publications
 - Manage Users & Permissions
 - Real-Time Blurring
 - Include basemaps and vector data
- Publish Mobile Mapping data to :
 - Browser
 - Mobile Device
 - SDK
 - Integrated Solutions

Mobile Mapping Publisher



Manage Projects and Publications

- Console and Administrator Tools
 - Includes Desktop Catalog tool
- Setup Publications
 - Streetlevel content
 - Basemap content
 - Extracted features
 - User Credentials & Permissions
 - Logging
- Client Authorization



Mobile Mapping Publisher - Blurring



Comply with Privacy Legislation

- Publish Blurred and/or Original images
 - Blur on-the-fly
 - to save disc space for imagery
 - Includes Privacy Issue Reporting tool
 - with citizen feedback to Blurring QC tool
- areas to be blurred must be defined using the Blur & Erase desktop tool



Publish to : Browser



Browser solution Features

- Spherical Imagery as primary User Interface content
- Various Web Page Templates
- Open using URL by XY, Photo name
- Configurable Search
- Measure, Save Measurements
- Load WMS, WFS services
- View Categories, Object Properties
- User Credentials, Permissions
- Use Log

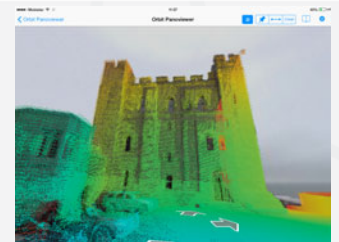


Publish to : Mobile Devices



free iOS App

- App Store "PanoViewer"
- Connect to any Publisher
 - Store login credentials
 - Native support for earthmine, Cyclomedia
- Search or Point on map
 - Photo recording positions overlay on map
- Open Spherical image
 - Natural Pan & Zoom
- On Image :
 - Point & Distance Measurement
 - LiDAR overlay



Publish to : SDK & Developer tools



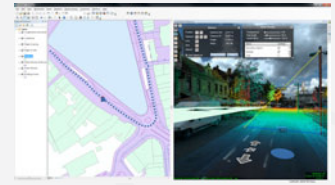
- 1 SDK, 3 API's
 - JavaScript
 - Flex
 - dotNet
- Online Documentation
 - password protected
- Developer Services
 - Dev/Test server
 - Translations
 - Product & Sales Authorization



Publish to : Integrated products



- Available:
 - ArcGIS 10.x
 - ArcGIS for Server 10.x
 - using Latitude GeoCortex
 - ArcGIS Online
- In development:
 - AutoCAD Map 2015
 - MicroStation 2016
 - QGIS, 2015
 - GeoMedia 2015



Publisher - Product Variations



- Functionality
 - Publish Imagery Only
 - upgrade possible
 - Publish for Intranet Only
 - upgrade possible
- Server options
 - Additional Server Cores
 - starts from 4-core server
 - Load Balancing (extra servers)
 - Backup/Recovery Server
 - Testing Server

Publisher - Hosting Solutions



- What ?
 - Setup a Publisher intended to host MM data for 3rd parties, customers
 - Volume based pricing
- Who ?
 - Service and Data providers
 - Anyone who has MM data to share or to sell
 - Anyone who wants to help out the customer on IT challenges
- Why ?
 - It's efficient for current customers
 - There are customers you haven't met yet looking for data

Publisher - Cloud Hosting Solutions



- What ?
 - Orbit GT cloud based hosting
 - Prepaid monthly service, with all cloud advantages
- Who ?
 - Anyone who has MM data to share or to sell
 - Anyone who wants to help out the customer on IT challenges
 - Anyone who doesn't want to take care of IT & hosting.
- Why ?
 - It's efficient, monthly payments
 - Data always online, automatic scaling of server capacity
 - Orbit GT upload service

Thank you

More info : www.orbitgt.com
© Orbit GT, 2015

