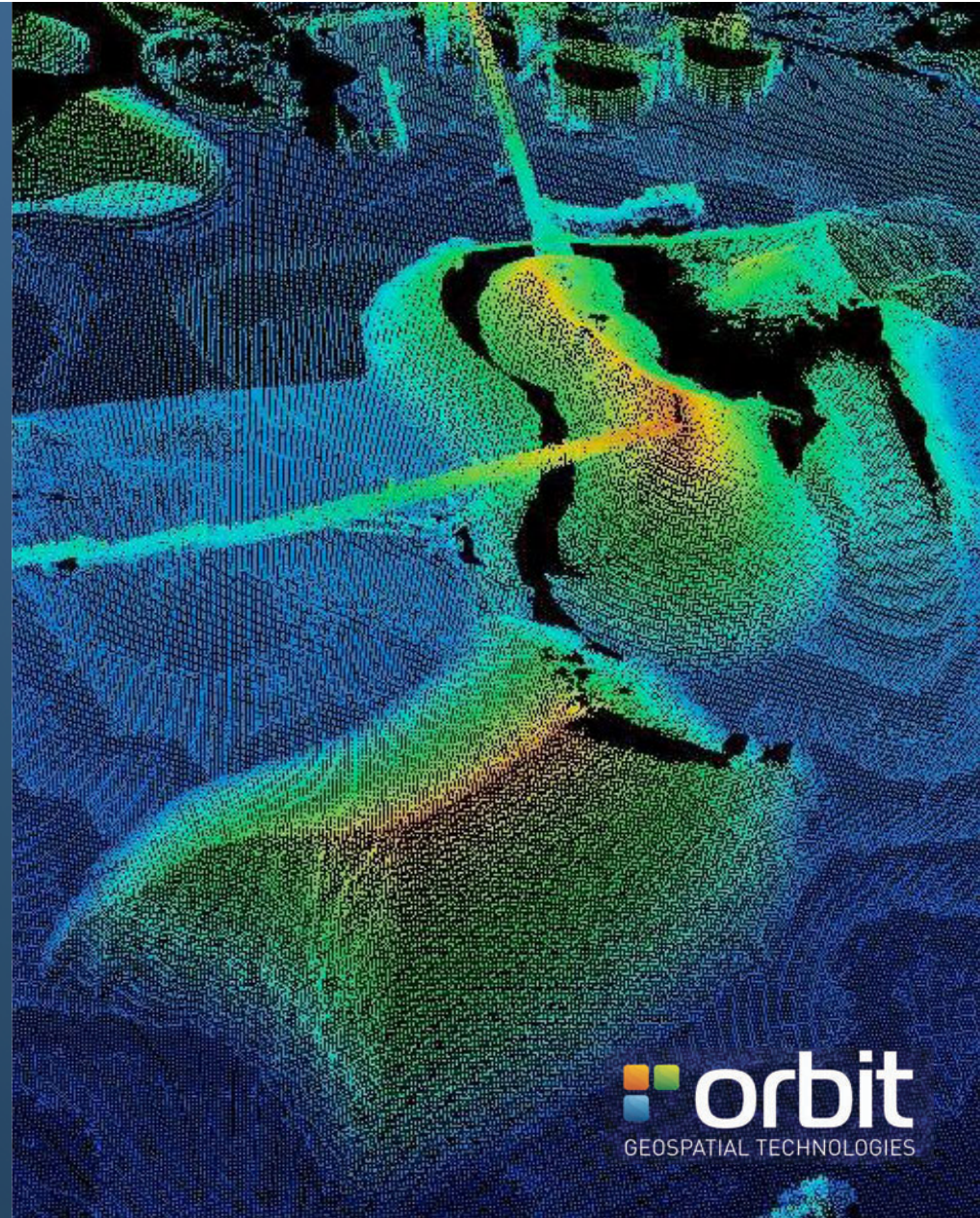


Orbit Mobile Mapping Version 11.2 Portfolio

November 2015

INTRODUCTION



Version 11 Portfolio



3 Main Product Offerings

- Content Manager
 - ▶ single desktop product

tool for data collectors, system owners
manipulates imagery, pointcloud

- Feature Extraction
 - ▶ series of desktop products

tool to extract points, lines, areas
clash detection, profile, volume, blur

- Publisher
 - ▶ web, mobile and integrated

tool to share online & integrate

The Life of Mobile Mapping data

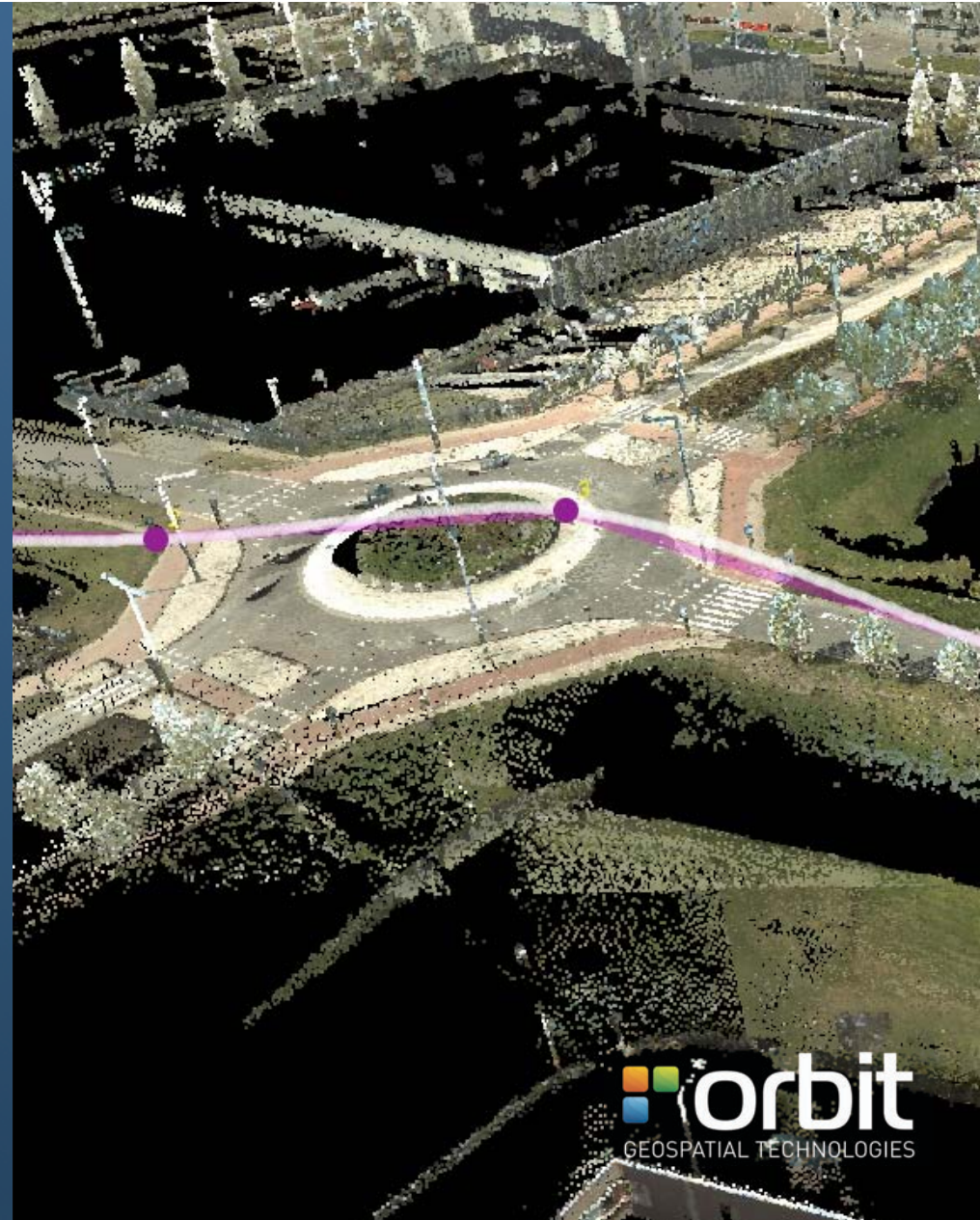


Who does what ?

	<i>COLLECT / PRODUCE</i> > CONTENT MANAGER	<i>EXTRACT / PROCESS</i> > FEATURE EXTRACTION	<i>SHARE / DELIVER</i> > PUBLISHER
MM SYSTEM OWNER	✓	✓	
SERVICE PROVIDER		✓	✓
END USER		✓	✓

A COUPLE OF CHALLENGES

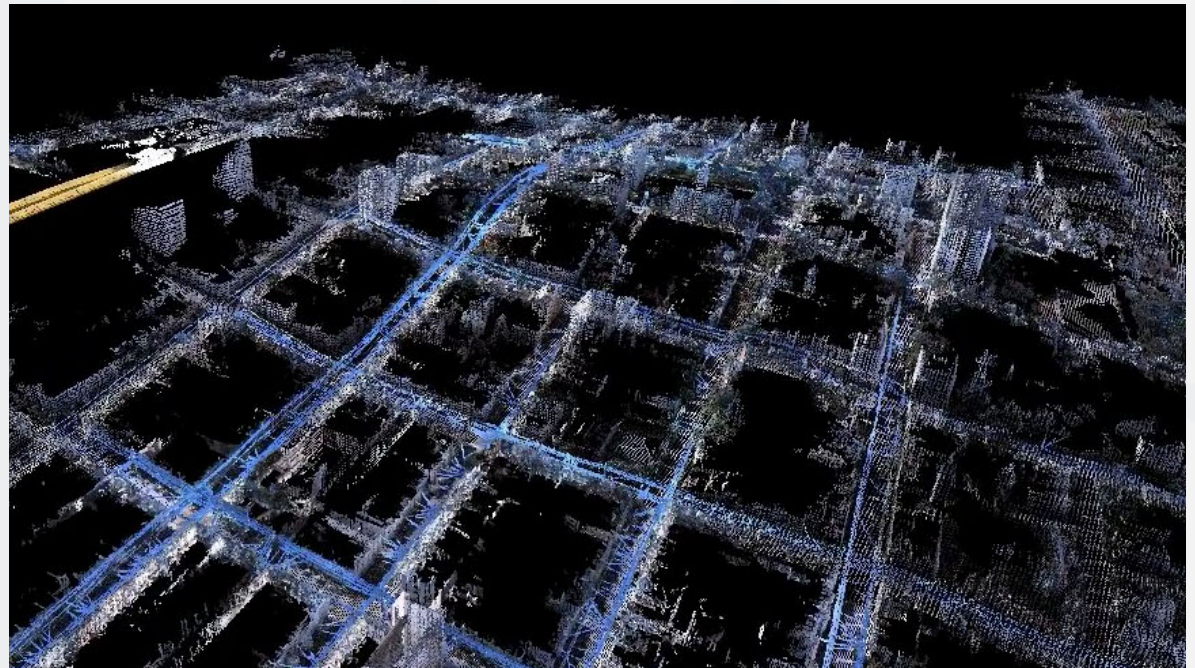
COVERED BY ALL
ORBIT MM PRODUCTS



Huge Volumes

Just a small example

- Imagery
LB5 - 30Mpx - 6MB / im
- Point Cloud
500K p/sec - 10B / pt
- Single collection, 1 hour
40 mi @ 40 mph
1800 bil. points - 18 GB
12.8 K images - 76.8 GB
- Makes 94 GB per hour,
about 0.75 TB a day



Performance

Just to give a general idea

- Imagery
30Mpx images, in memory = 240 MB RAM
- Point Cloud
100 m stretch = about 28 MB RAM
- Network
100 Mbit/sec
- Makes Loading time = 2.72 sec
(excluding disc performance)

Visualization & Navigation

Imagery

Spherical

Planar

Any resolution, multiresolution

Point Cloud

any density

Clip / Select / Extract

TIN / DEM

Navigation

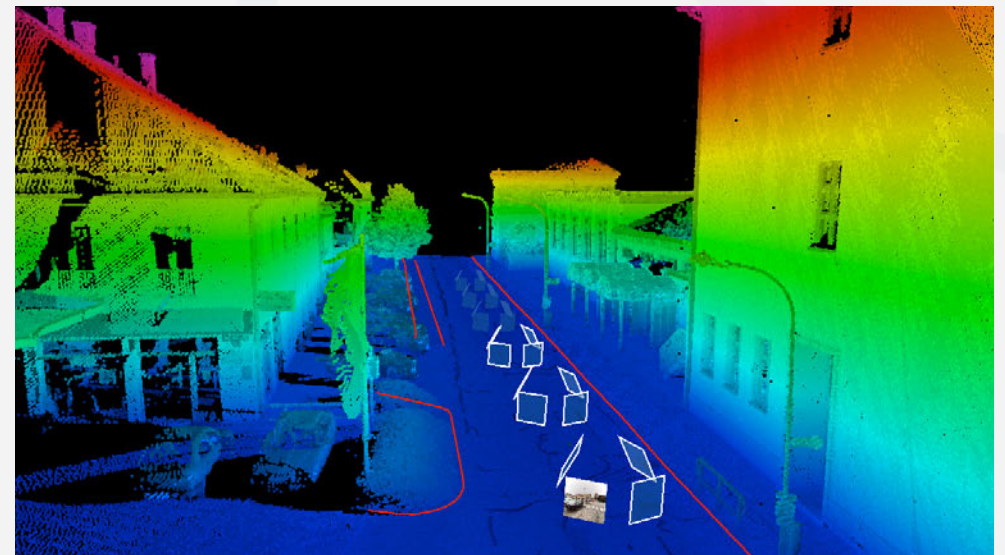
all movements with single mouse fn

streamed loading of points with LOD

Visualization

Colored by RGB, Intensity, Height, Depth
or Combined views

LiDAR-over-Image



Orbit Solutions



- Optimized Storage
 - ▶ Minimum Server-Side processing required

- High Bandwidth solutions
 - ▶ Stand-Alone desktop
 - ▶ Client-Server desktop

- Low Bandwidth solutions
 - ▶ Publisher

- Single Storage, maximum use

CONTENT MANAGER

FOR
MOBILE MAPPING DATA COLLECTORS



The Life of Mobile Mapping data



Content Manager product

Overview

- Import
 - Catalog
 - Clean Point Cloud
 - Check GCPoints
 - Trajectory Adjustment
 - Remove multiple passes
 - Consolidate and Deliver
-
- Single Desktop product, available in
 - ▶ stand-alone only



Content Manager - Import

Manage the Massive Volumes



■ Import

- Vehicle-based configuration template

- Optimization & indexing

- Spherical & Planar Imagery

- Any Pointcloud size

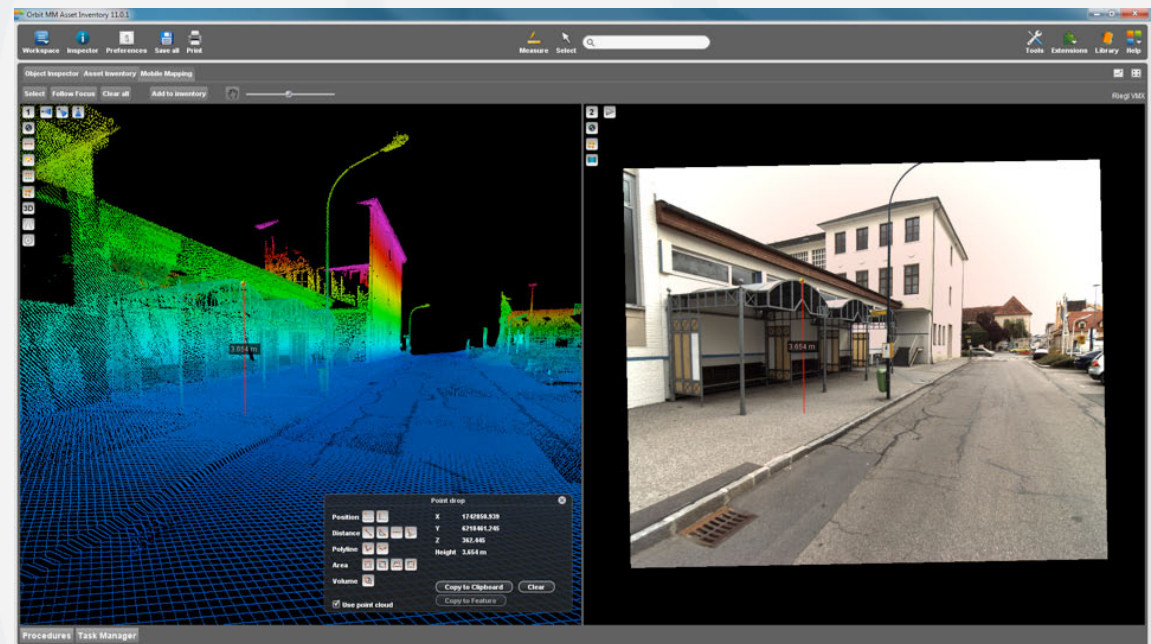
- Camera Calibration

■ All hardware setups supported

■ Collect Metadata

- Timestamped Trajectory

- Coverage / Envelope

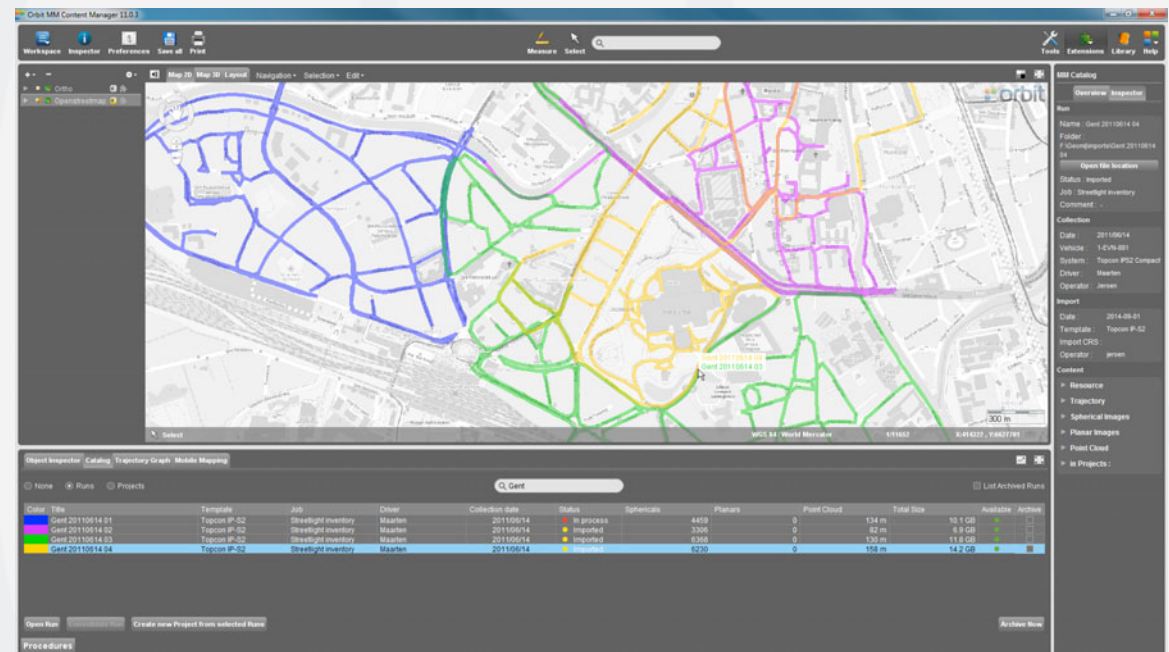


Content Manager - Organize



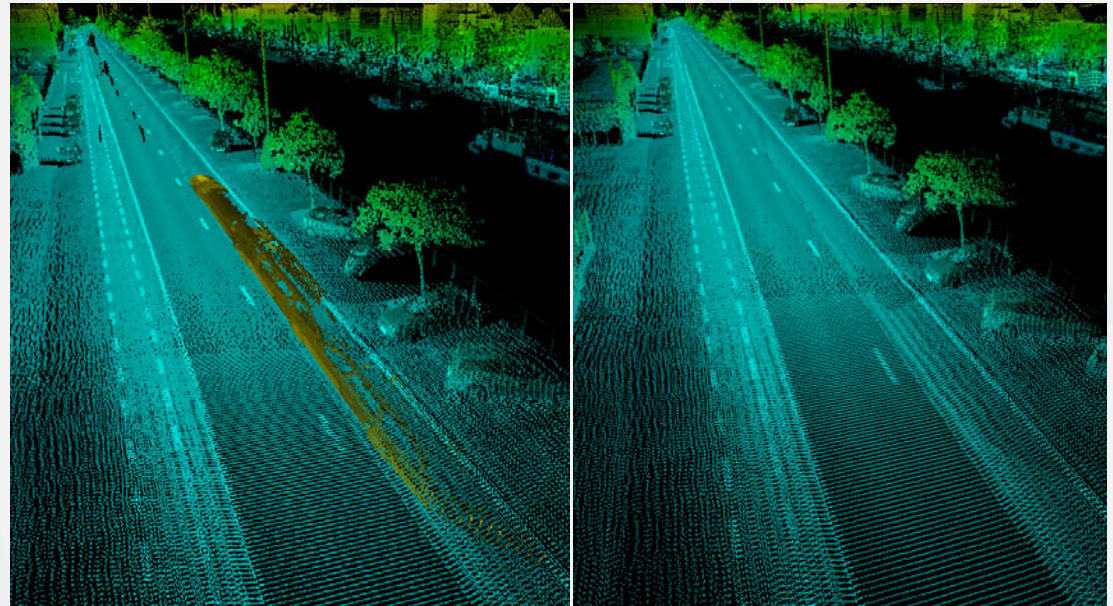
Keep track of your data

- Catalog of Runs
 - Select and Inspect
 - Status
 - Open for editing
 - Find and remove multiple passes
 - Manage Metadata
 - Archive
- Combine to Projects
- Search
- Overview Map Display



Content Manager - Point Cloud Cleaning

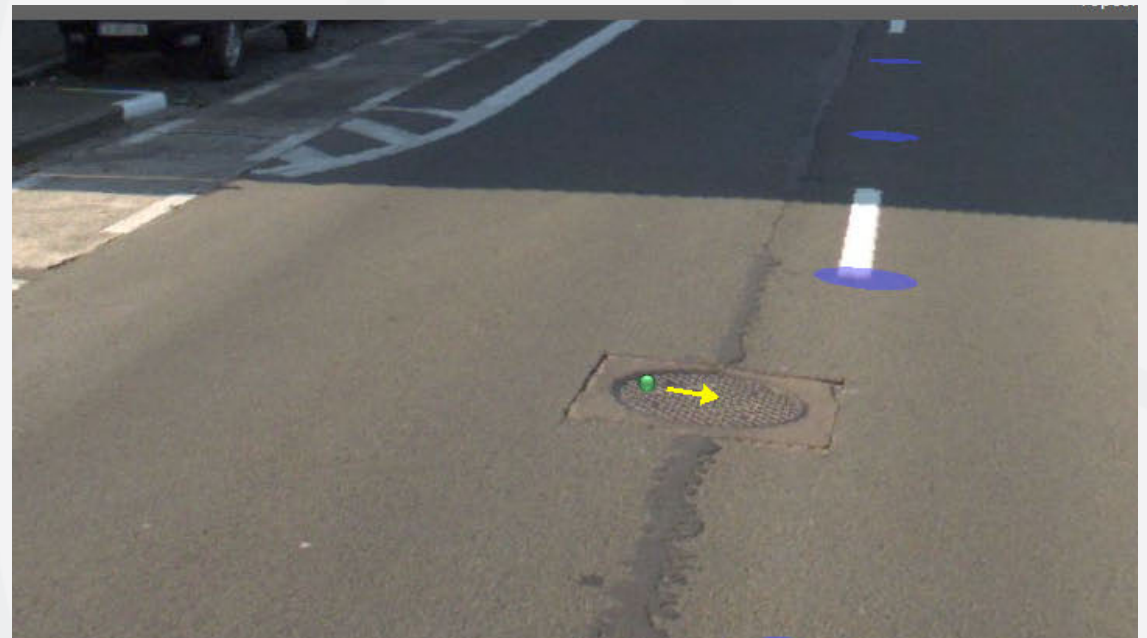
- Eliminate unwanted portions of points, due to e.g. moving objects
- Fast Selection tools
 - merge
 - subtract
 - auto-remove ground
- Highlight / Dim / Hide
- Dynamic Deletion of Selections
- Huge Volumes, 1 file.



Content Manager - Positional Accuracy

Check and set Constraints

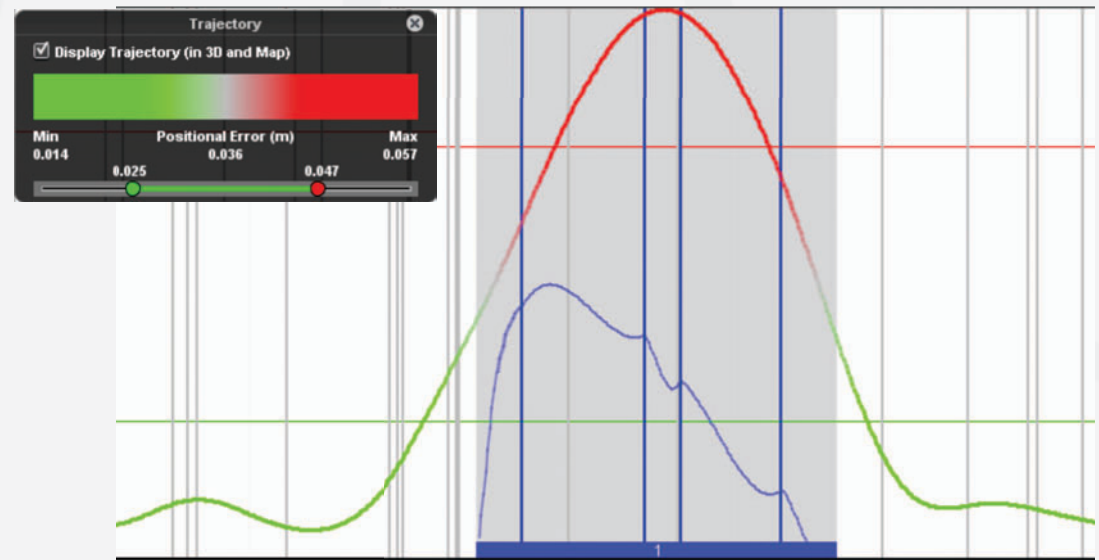
- Load & List GCPoints
- Visualize
 - on map
 - on imagery
 - in pointcloud
- Measure differences
 - in any view
 - accept as constraints
- Check with any reference and MM data
- Report



Content Manager - Trajectory Adjustment

Correct Positional Accuracy

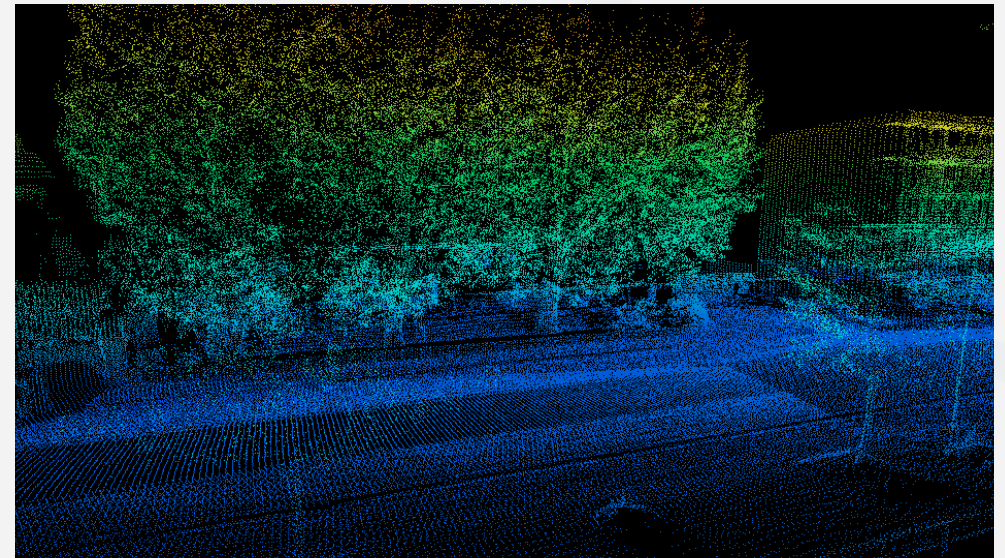
- Interpretation & Judgement
 - ▶ Display GPS Error over time
 - ▶ Graph representation
 - ▶ Measure and Display Constraints
- Adjust or Remove Trajectory
 - ▶ Select part to Adjust or Remove
 - ▶ Preview and Process Adjustment
 - ▶ Do Multiple Stretches
 - ▶ Remove Multiple Passes



Content Manager - Consolidate


Get ready for next phase, feature extraction

- Reprocess Runs & Projects
 - cleaned pointcloud
 - corrected trajectory
 - removed multiple passes
- Stores as clean and new run
- Delivery :
 - Combine (portions of) runs / project into a single “delivery run”



Content Manager - Extra Tools

- Task Manager Utility
 - ▶ List Jobs To Do
 - ▶ Select and Process at night
 - ▶ Review
- Export
- Movie Maker



Description	Task	Progress	Date
Process Imagery Topcon BE Gent Gasmeterlaan 110	<input checked="" type="checkbox"/> 0 / 735		17-04-2014 05:34
Import Point Cloud Topcon BE Gent Gasmeterlaan 110	<input checked="" type="checkbox"/> 27M opc		17-04-2014 05:38

FEATURE EXTRACTION

FOR
DATA PRODUCTION, ANALYSIS,
OPERATIONAL WORKFLOWS



The Life of Mobile Mapping data



Feature Extraction products

Overview

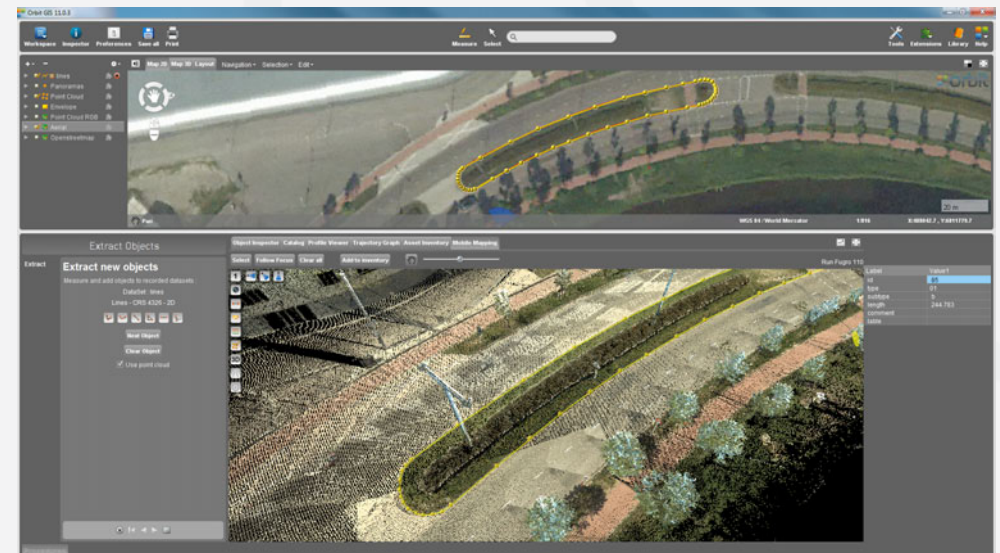
- Feature Extraction Basic
- Asset Inventory Bundle
 - ▶ adds Asset Inventory workflows
- Feature Extraction Bundle
 - ▶ adds Clash Detection, Profiles & Cross Sections, Volumetric Analysis
- Blur & Erase
- *Desktop products, available in*
 - ▶ stand-alone (all)
 - ▶ client-server (Asset Inventory Bundle only)



Feature Extraction - Basic Edition

Entry level - manual extraction - get started

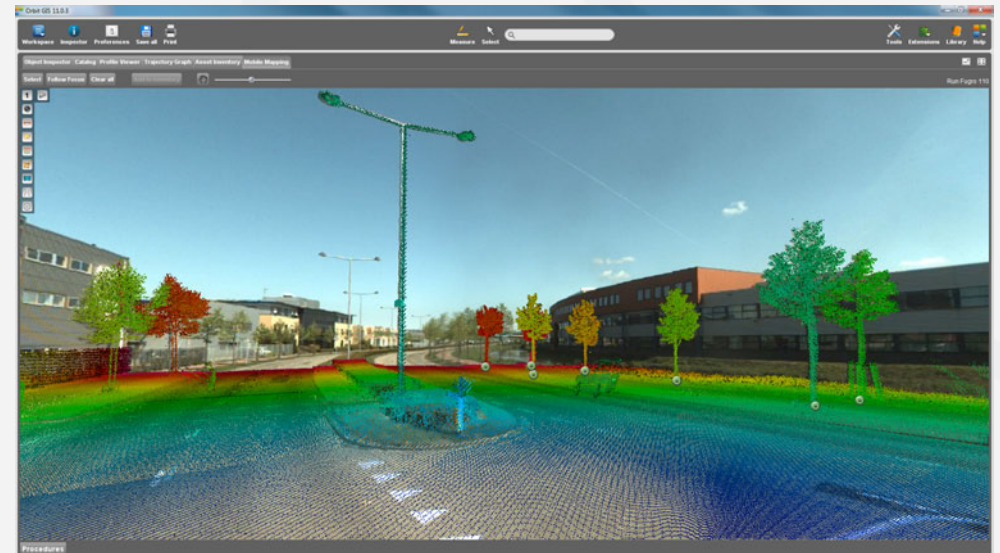
- Entry Level
- Open Runs & Projects
- Simple Measurement Procedures
- Measure in Image, Point Cloud
- Measure Point, Line, Area
 - ▶ Display in CRS, WGS84, Lat/Lon
 - ▶ Display Slope, Height, ...
- Manual Attribution to any dataset



Feature Extraction - Asset Inventory

Advanced Workflow Asset Extraction & Storage

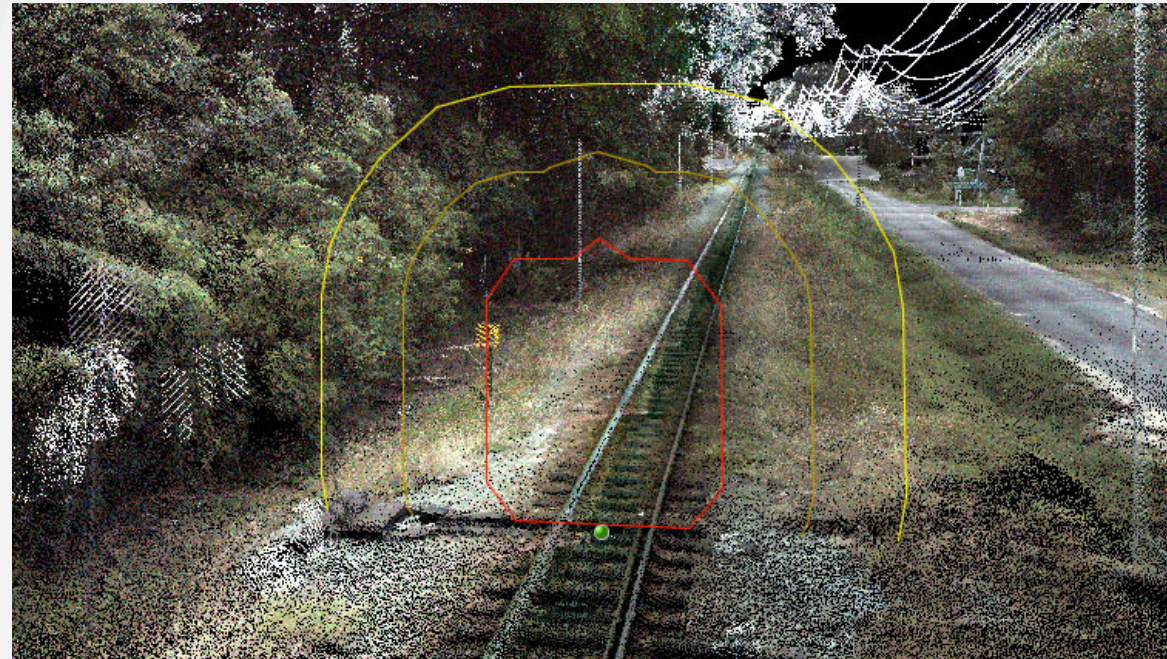
- Use Workflows
- Design Themes
- Share data
- Store in Database
- Add Snapshots, documents, attributes
- Additional Measurement functions



Feature Extraction - Clash Detection

Clash Detection & Clearance Measurements

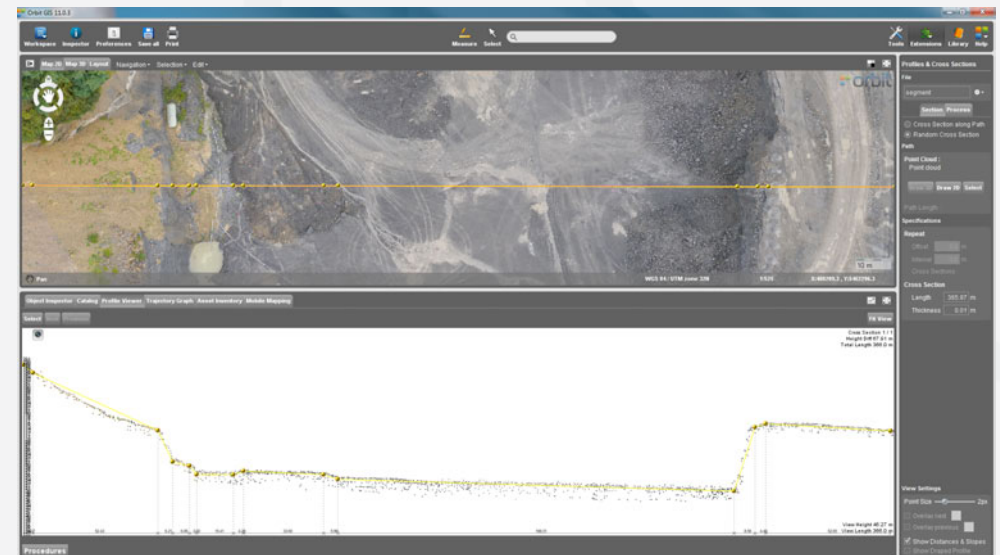
- Any 3D Path
supports railroad slant
- Any Form
- Autodetect Hits
register Near-Hits, Watch list
- Report
- Judge & Act



Feature Extraction - Profiles

Automated Cross Sections & Reusable Profiles

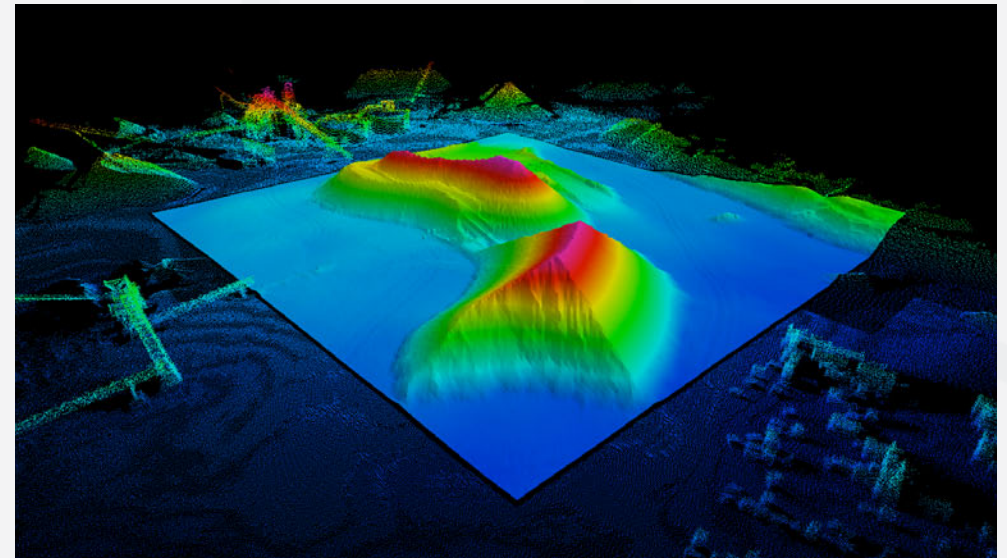
- Various Profiles
 - ▶ Path with Cross Sections
 - ▶ Single Profile
 - ▶ Set Profile length & width
- Isometric View
- Register Themes
 - ▶ Integrated with Asset Inventory
- Register Tech Profile
- Delivery



Feature Extraction - Volumetric Analysis

Any Volume and Volume Comparison

- Use any 3D Datasource
- Set Fence as perimeter
- Use Reference Data
To Compare
- Calculate Cut & Fill
- Delivery
 - Creates DEM / TIN
 - Creates Shape files, attributes
 - Creates Contour Lines



Blur & Erase

QA and QC Blur & Erase areas, update & deliver

- Detection Service
 - ▶ Faces & Plates detection
 - ▶ registers areas of interest in Metadata
- Blur & Erase Editor
 - ▶ Simulate
 - ▶ Process Imagery
 - ▶ Deliver



Production teams

Maximize production with central data storage in Client-Server setup

■ Stand-Alone

- ▶ All products available
- ▶ Manual Mgmt of data

■ Client-Server

- ▶ Only Asset Inventory Bundle
- ▶ Central Management of
 - Mobile Mapping data
 - Users & Permissions
 - Workspaces
 - Asset Inventory Database

Bundled products

Asset Inventory and Feature Extraction bundles

Asset Inventory bundle

includes :

- ▶ Feature Extraction basic
- ▶ Asset Inventory

Feature Extraction bundle

includes:

- ▶ Feature Extraction basic
- ▶ Asset Inventory
- ▶ Clash Detection
- ▶ Profiles
- ▶ Volumes, Contour Lines

Bundled products (2)

Full Office bundle



- Full Office bundle
 - includes :*
 - ▶ Content Manager
 - ▶ Feature Extraction bundle



Orbit MM Explorer

Desktop Content Viewer tool

- Views all imported MM data
- Same engine and GUI
 - ▶ Easy to use
 - ▶ All visualisation options
 - ▶ All measure tools
- No registration / extraction / editing
- Tool to ship with **prepared** content

- Single Desktop product, available in stand-alone only

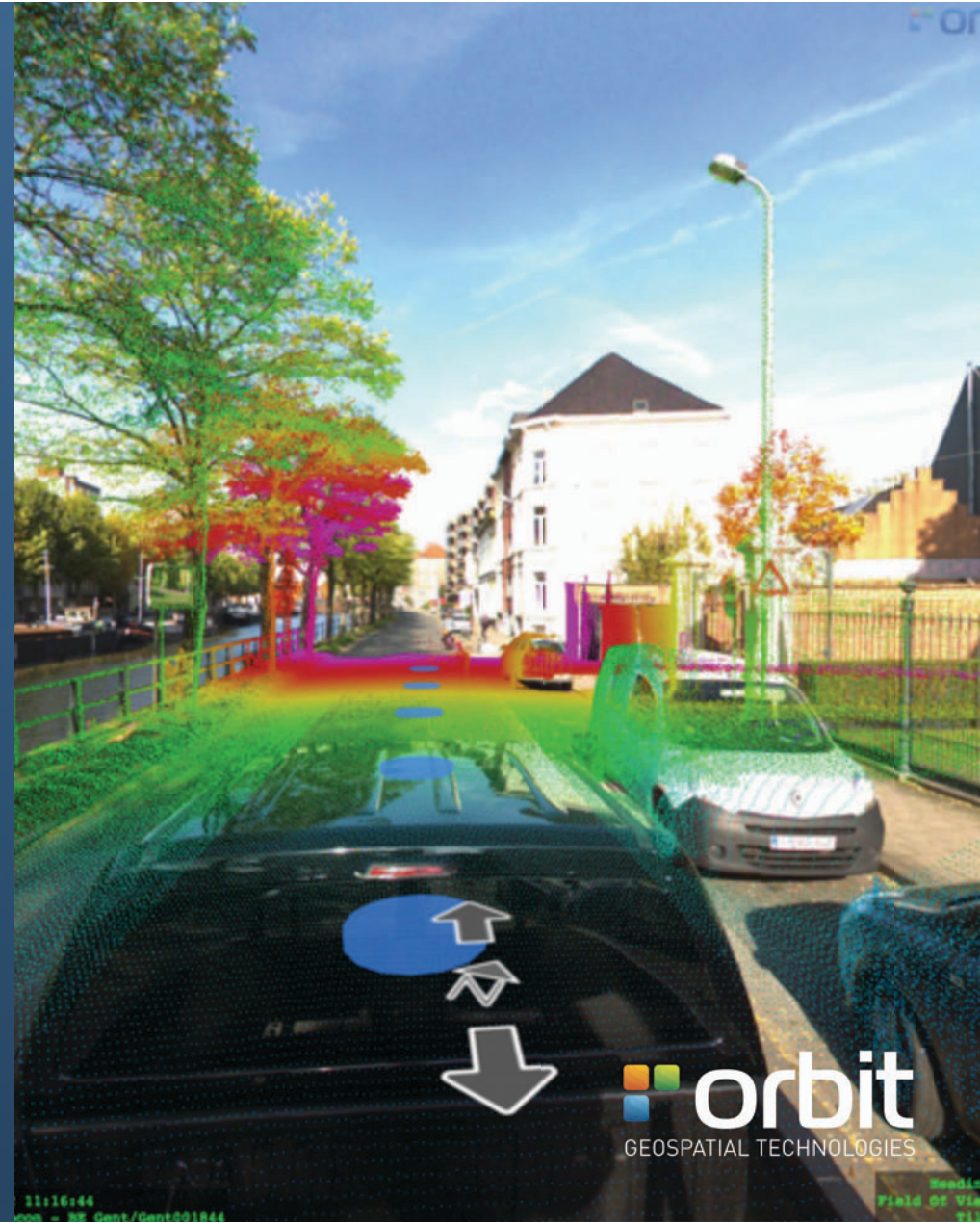


Orbit MM Blur & Erase

Desktop Editing, QC and Processing

- Accesses all data
 - Allows to identify areas of interest
 - Update and Process Imagery
-
- Single Desktop product, available in stand-alone only

FOR SHARING OF MOBILE MAPPING DATA



The Life of Mobile Mapping data



Publisher products

Overview

- Mobile Mapping Publisher
 - includes Browser Publishing
- iOS App
- SDK with 3 API's
- Plugins for
 - Esri ArcGIS for Desktop
 - Esri ArcServer using GeoCortex
 - Esri ArcOnline (App)
 - AutoDesk AutoCAD Map*
 - Integrgraph GeoMedia*
 - Bentley MicroStation*
 - QGIS, ...*

Mobile Mapping Publisher

Publisher Features

- Main Features :
 - Unlimited Image & LiDAR data
 - Manage Projects & Publications
 - Manage Users & Permissions
 - Real-Time Blurring
 - Include basemaps and vector data
- Publish Mobile Mapping data to :
 - Browser
 - Mobile Device
 - SDK
 - Integrated Solutions

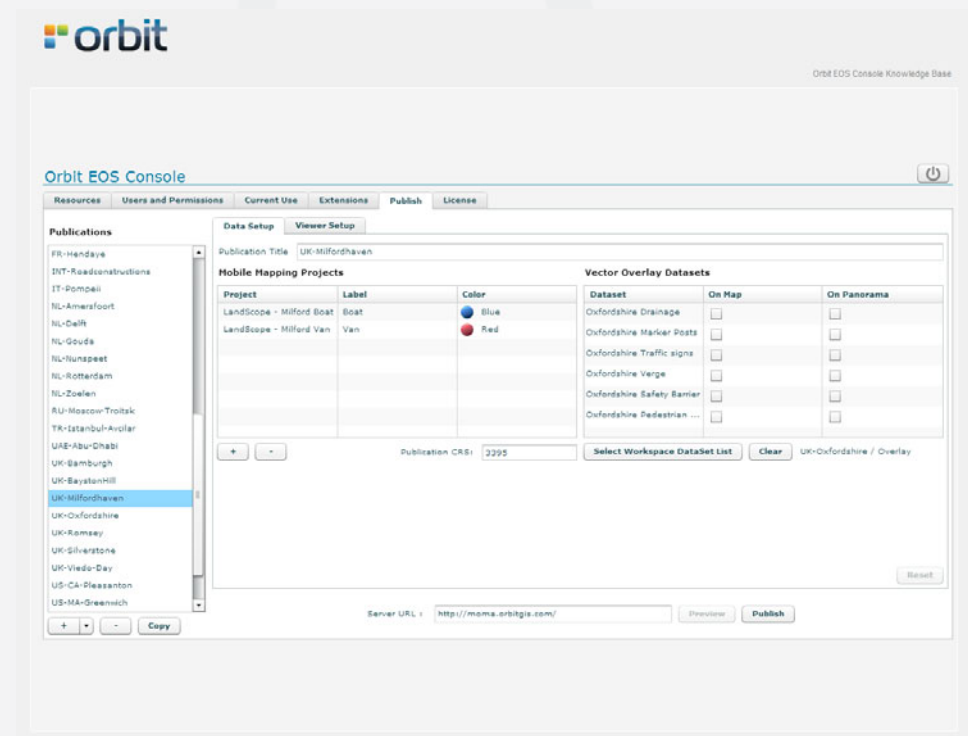
Mobile Mapping Publisher

Manage Projects and Publications

- Console and Administrator Tools
 - Includes Desktop Catalog tool

- Setup Publications
 - Streetlevel content
 - Basemap content
 - Extracted features
 - User Credentials & Permissions
 - Logging

- Client Authorization

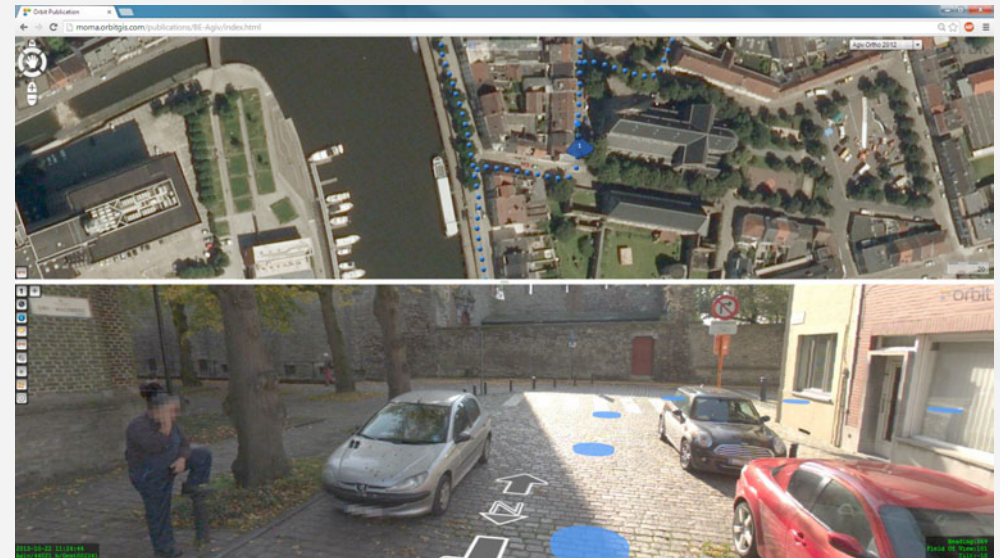


Mobile Mapping Publisher - Blurring

Comply with Privacy Legislation

- Publish Blurred and/or Original images
- Blur on-the-fly
 - to save disc space for imagery
- Includes Privacy Issue Reporting tool
 - with citizen feedback to Blurring QC tool

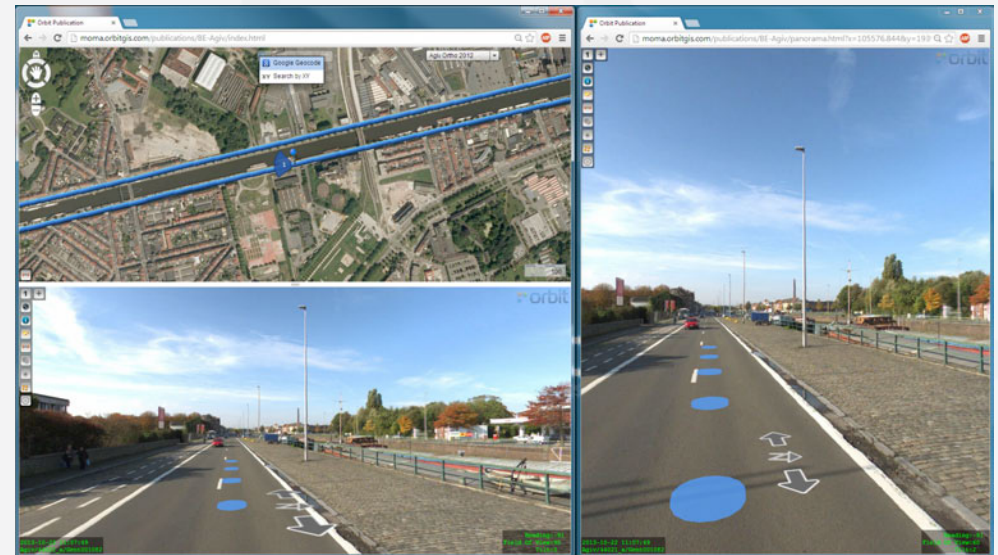
areas to be blurred must be defined using the Blur & Erase desktop tool



Publish to : Browser

Browser solution Features

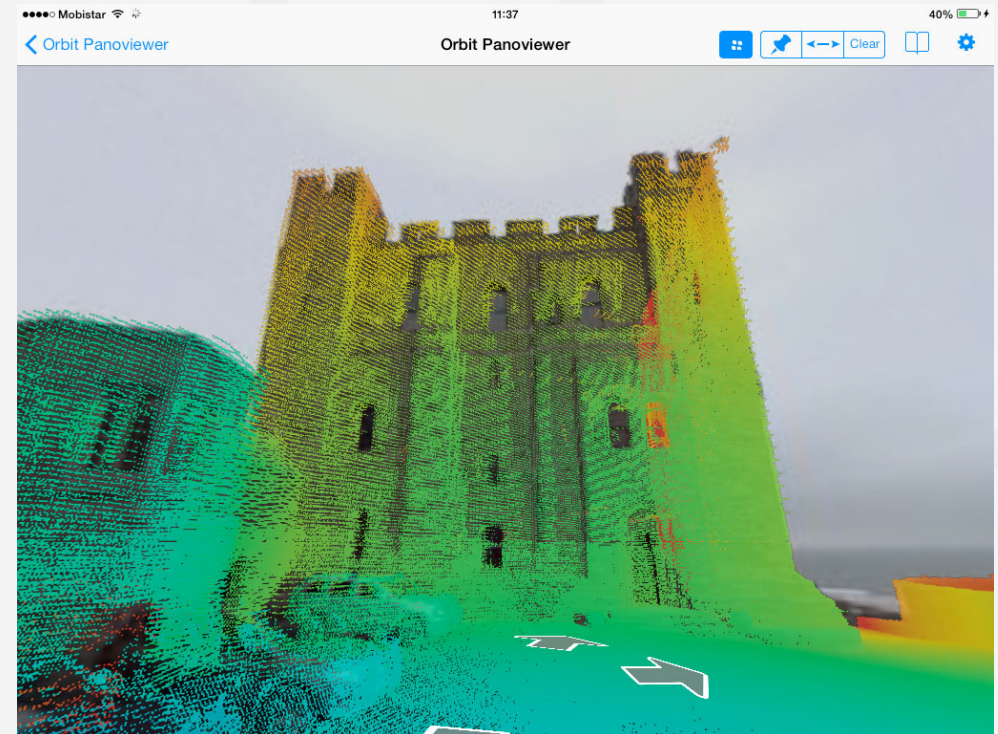
- Spherical Imagery as primary User Interface content
- Various Web Page Templates
- Open using URL by XY, Photo name
- Configurable Search
- Measure, Save Measurements
- Load WMS, WFS services
- View Categories, Object Properties
- User Credentials, Permissions
- Use Log



Publish to : Mobile Devices

free iOS App

- App Store “PanoViewer”
- Connect to any Publisher
 - Store login credentials
 - Native support for earthmine, Cyclomedia
- Search or Point on map
 - Photo recording positions overlay on map
- Open Spherical image
 - Natural Pan & Zoom
- On Image :
 - Point & Distance Measurement
 - LiDAR overlay



Publish to : SDK & Developer tools

1 SDK, 3 API's

JavaScript

Flex

dotNet

Online Documentation

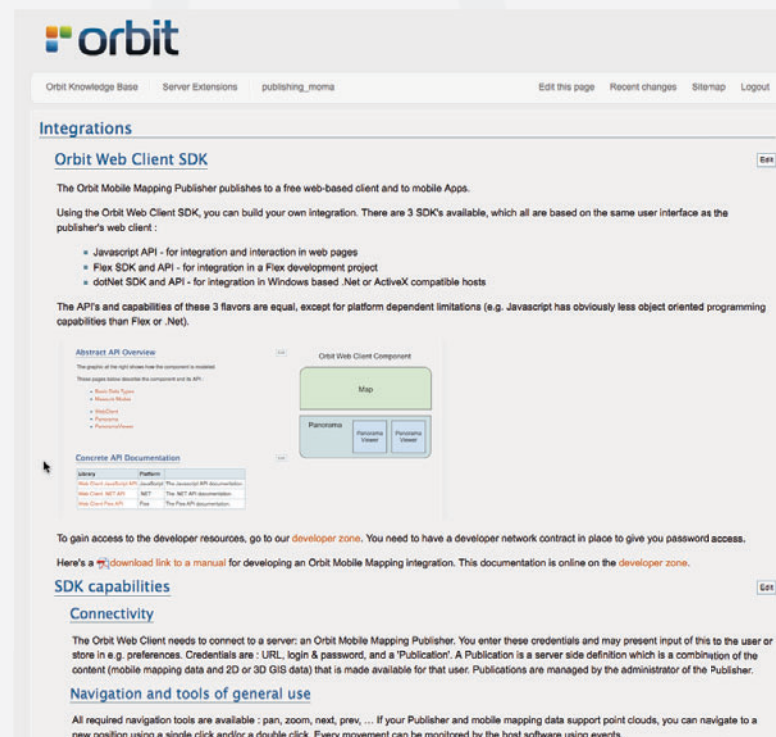
password protected

Developer Services

Dev/Test server

Translations

Product & Sales Authorization

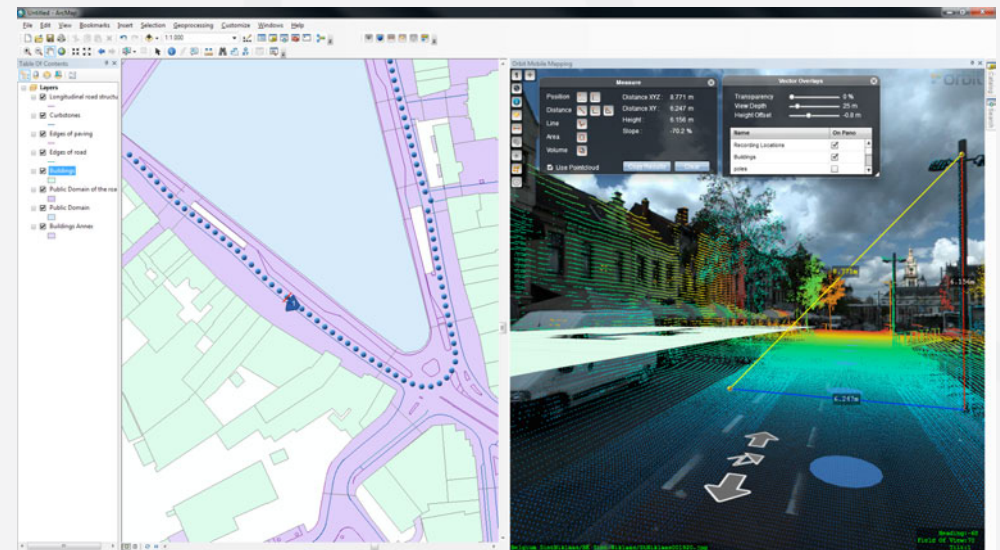


The screenshot shows the 'Integrations' section of the Orbit Web Client SDK documentation. It includes a table for 'Concrete API Documentation' with columns for 'Library' and 'Platform'. The table lists three entries: 'Web Client JavaScript API', 'Web Client Flex API', and 'Web Client .NET API'. The 'Web Client JavaScript API' entry is highlighted. Below the table, there is a section for 'Connectivity' and 'Navigation and tools of general use'.

Library	Platform
Web Client JavaScript API	JavaScript
Web Client Flex API	Flex
Web Client .NET API	.NET

Publish to : Integrated products

- Available:
 - ▶ ArcGIS 10.x
 - ▶ ArcGIS for Server 10.x
 - using Latitude GeoCortex
 - ▶ ArcGIS Online
- In development:
 - ▶ AutoCAD Map 2015
 - ▶ MicroStation 2016
 - ▶ QGIS, 2015
 - ▶ GeoMedia 2015



Publisher - Product Variations

■ Functionality

- ▶ Publish Imagery Only
upgrade possible
- ▶ Publish for Intranet Only
upgrade possible

■ Server options

- ▶ Additional Server Cores
starts from 4-core server
- ▶ Load Balancing (extra servers)
- ▶ Backup/Recovery Server
- ▶ Testing Server

Publisher - Hosting Solutions

- What ?
 - Setup a Publisher intended to host MM data for 3rd parties, customers
 - Volume based pricing
- Who ?
 - Service and Data providers
 - Anyone who has MM data to share or to sell
 - Anyone who wants to help out the customer on IT challenges
- Why ?
 - It's efficient for current customers
 - There are customers you haven't met yet looking for data

Publisher - Cloud Hosting Solutions

■ What ?

Orbit GT cloud based hosting

Prepaid monthly service, with all cloud advantages

■ Who ?

Anyone who has MM data to share or to sell

Anyone who wants to help out the customer on IT challenges

Anyone who doesn't want to take care of IT & hosting.

■ Why ?

It's efficient, monthly payments

Data always online, automatic scaling of server capacity

Orbit GT upload service

Thank you

More info : www.orbitgt.com

© Orbit GT, 2015