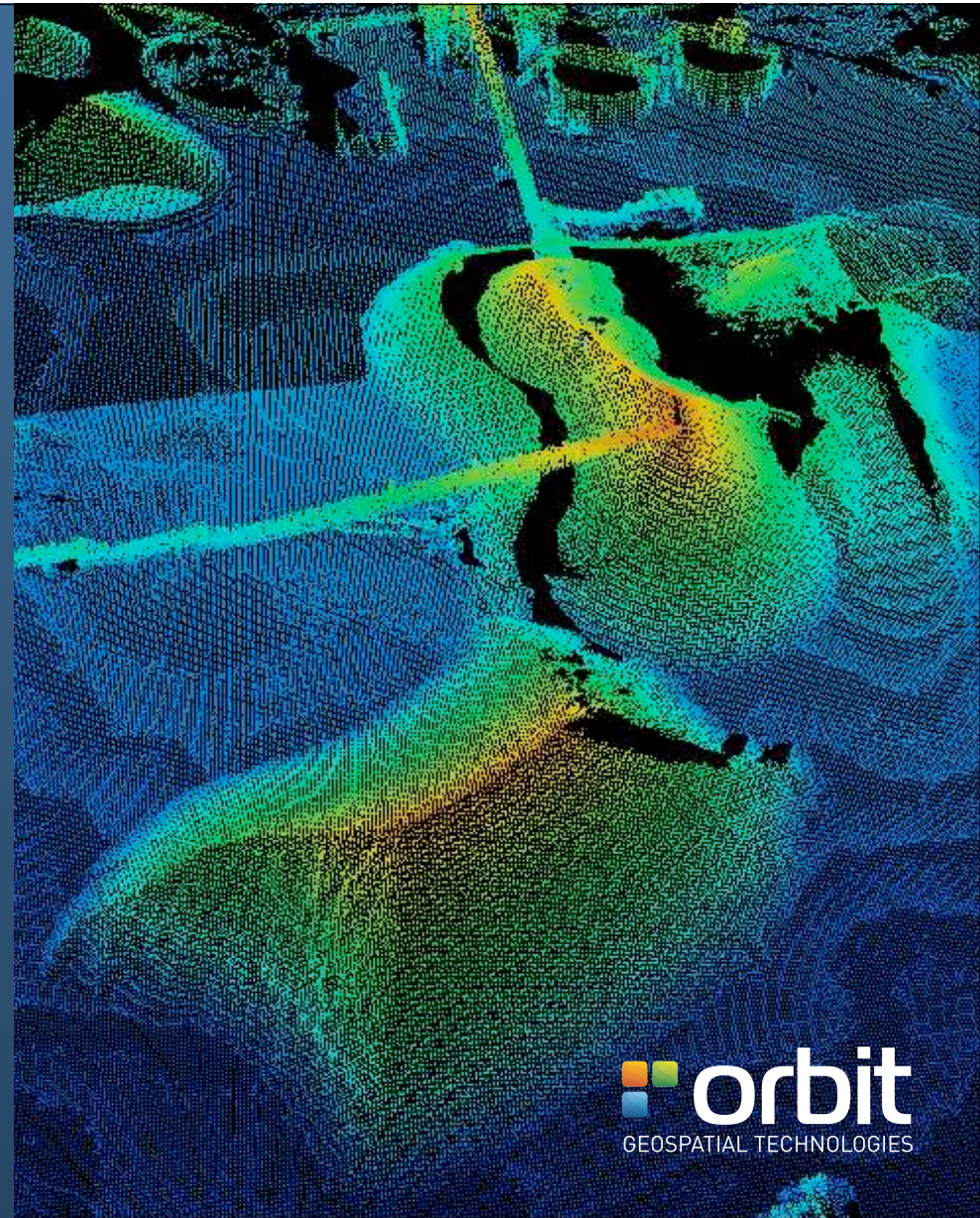


Orbit Mobile Mapping Version 11 Portfolio

September 2014



INTRODUCTION



Version 11 Portfolio

3 Main Product Offerings

■ Content Manager

- ▶ single desktop product

tool for data collectors, system owners
manipulates imagery, pointcloud

■ Feature Extraction

- ▶ series of desktop products

tool to extract points, lines, areas
clash detection, profile, volume, blur

■ Publisher

- ▶ web, mobile and integrated

tool to share online & integrate

The Life of Mobile Mapping data

COLLECT / PRODUCE
> CONTENT MANAGER

- Plan
- Collect
- PostProcess with HW Vendor Tools
- Orbit MM Content Manager
- Organize
- Clean
- Correct
- Deliver MM Content

EXTRACT / PROCESS
> FEATURE EXTRACTION

- Extract Features
- Asset Inventory
- Clearance / Collisions / Clash
- Profiles & Cross Sections
- Volumes
- Face & Plate detection
- Blurring QC
- Deliver Features

SHARE / DELIVER
> PUBLISHER

- Consume via Web
- Consume via App
- Consume via SDK
- Plugins / Integrations
- Embed in Workflow
- Find Resources

Who does what ?

	<i>COLLECT / PRODUCE</i> > CONTENT MANAGER	<i>EXTRACT / PROCESS</i> > FEATURE EXTRACTION	<i>SHARE / DELIVER</i> > PUBLISHER
MM SYSTEM OWNER	✓	✓	
SERVICE PROVIDER		✓	✓
END USER		✓	✓

A COUPLE OF CHALLENGES

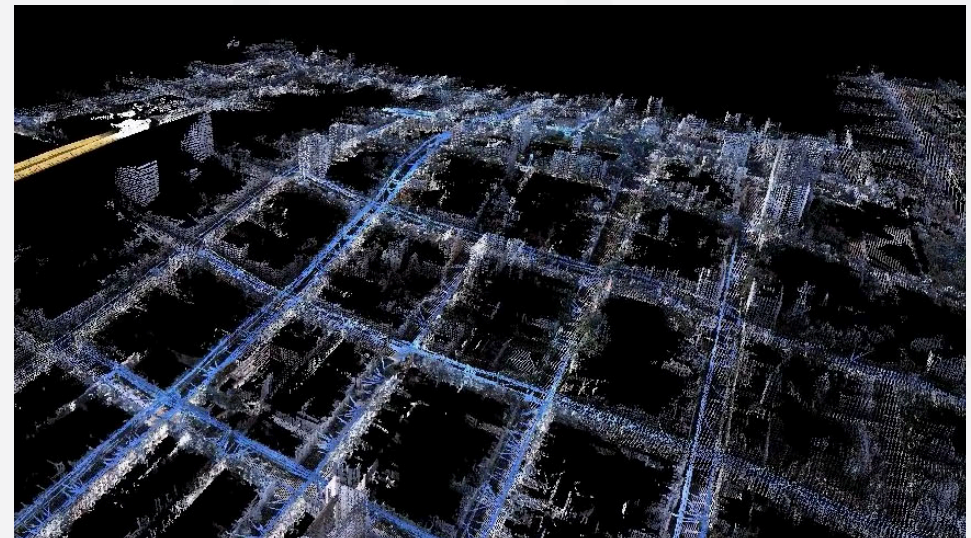
COVERED BY ALL
ORBIT MM PRODUCTS



Huge Volumes

Just a small example

- Imagery
 - LB5 - 30Mpx - 6MB / im
- Point Cloud
 - 500K p/sec - 10B / pt
- Single collection, 1 hour
 - 40 mi @ 40 mph
 - 1800 bil. points - 18 GB
 - 12.8 K images - 76.8 GB
- Makes 94 GB per hour,
about 0.75 TB a day



Performance

Just to give a general idea

- Imagery
30Mpx images, in memory = 240 MB RAM
- Point Cloud
100 m stretch = about 28 MB RAM
- Network
100 Mbit/sec
- Makes Loading time = 2.72 sec
(excluding disc performance)

Visualization & Navigation

- Imagery

 - Spherical

 - Planar

 - Any resolution, multiresolution

- Point Cloud

 - any density

 - Clip / Select / Extract

 - TIN / DEM

- Navigation

 - all movements with single mouse fn

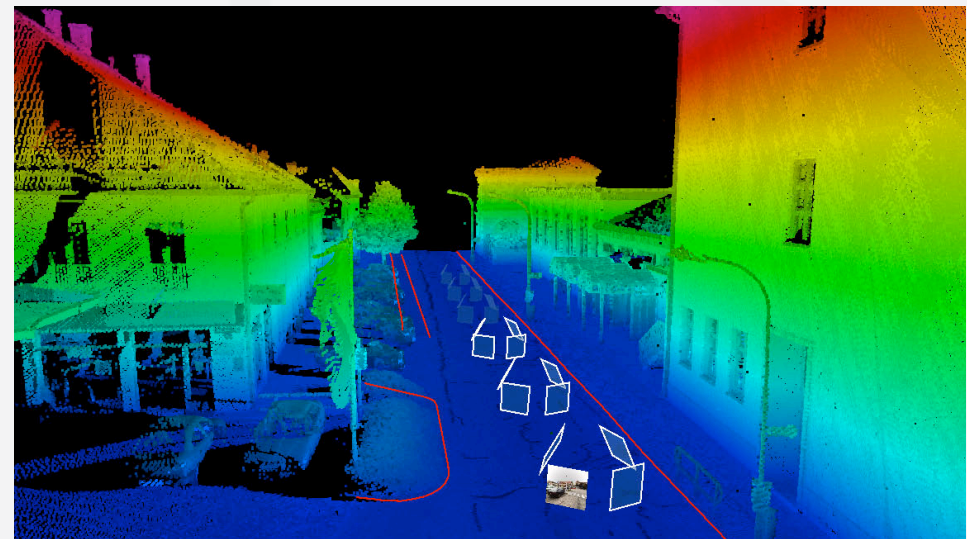
 - streamed loading of points with LOD

- Visualization

 - Colored by RGB, Intensity, Height, Depth or Combined views

 - LiDAR-over-Image,

 - Vector superimposition on image, LiDAR



Orbit Solutions

- Optimized Storage
 - ▶ Minimum Server-Side processing required

- High Bandwidth solutions
 - ▶ Stand-Alone desktop
 - ▶ Client-Server desktop

- Low Bandwidth solutions
 - ▶ Publisher

- Single Storage, maximum use

CONTENT MANAGER

FOR
MOBILE MAPPING DATA COLLECTORS



The Life of Mobile Mapping data



Content Manager product

Overview

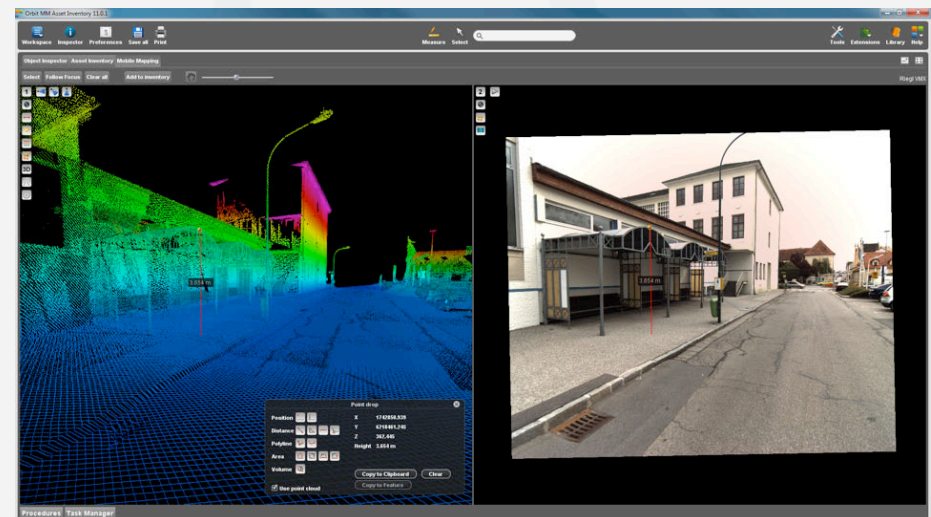
- Import
 - Catalog
 - Clean Point Cloud
 - Check GCPoints
 - Trajectory Adjustment
 - Remove multiple passes
 - Consolidate and Deliver
-
- Single Desktop product, available in
 - ▶ stand-alone only



Content Manager - Import

Manage the Massive Volumes

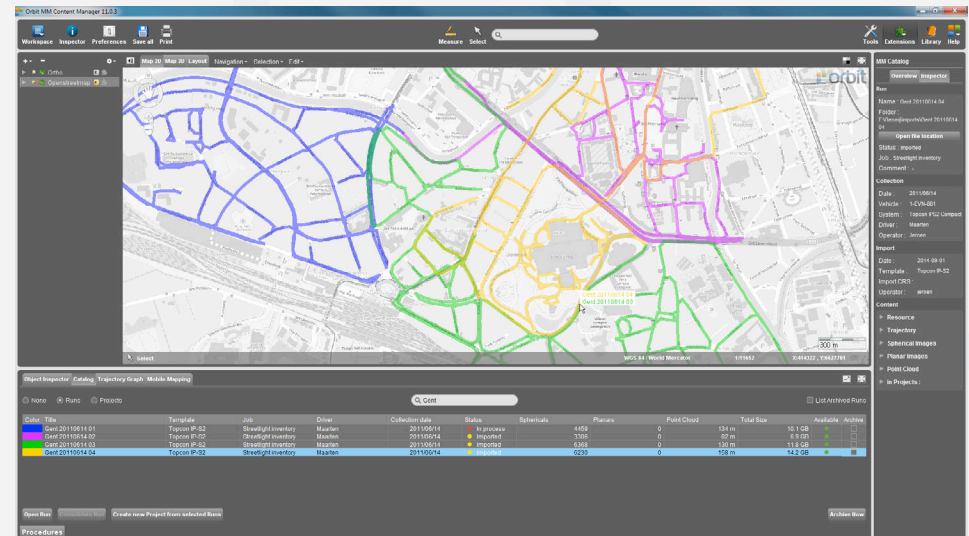
- Import
 - Vehicle-based configuration template
 - Optimization & indexing
 - Spherical & Planar Imagery
 - Any Pointcloud size
 - Camera Calibration
- All hardware setups supported
- Collect Metadata
 - Timestamped Trajectory
 - Coverage / Envelope



Content Manager - Organize

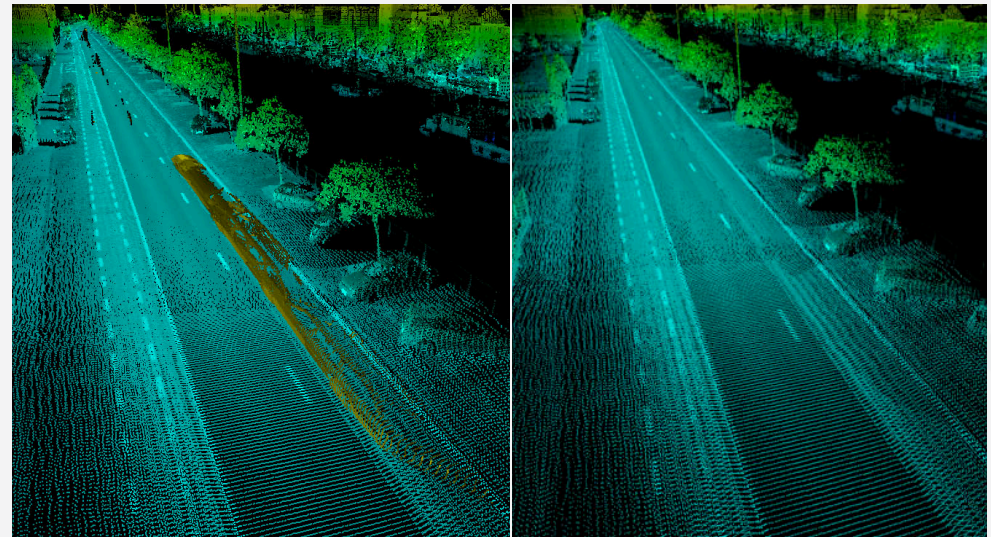
Keep track of your data

- Catalog of Runs
 - Select and Inspect Status
 - Open for editing
 - Find and remove multiple passes
 - Manage Metadata
 - Archive
- Combine to Projects
- Search
- Overview Map Display



Content Manager - Point Cloud Cleaning

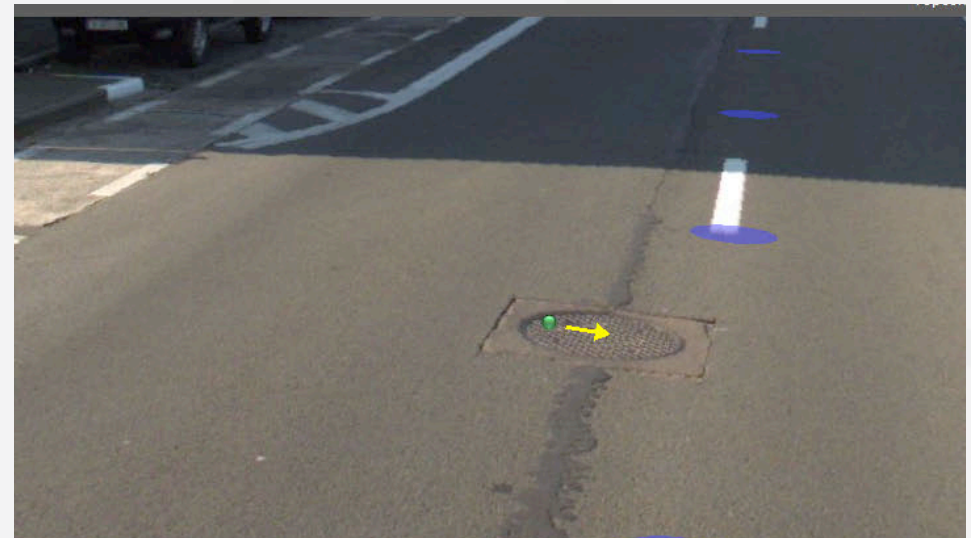
- Eliminate unwanted portions of points, due to e.g. moving objects
- Fast Selection tools
 - merge
 - subtract
 - auto-remove ground
- Highlight / Dim / Hide
- Dynamic Deletion of Selections
- Huge Volumes, 1 file.



Content Manager - Positional Accuracy

Check and set Constraints

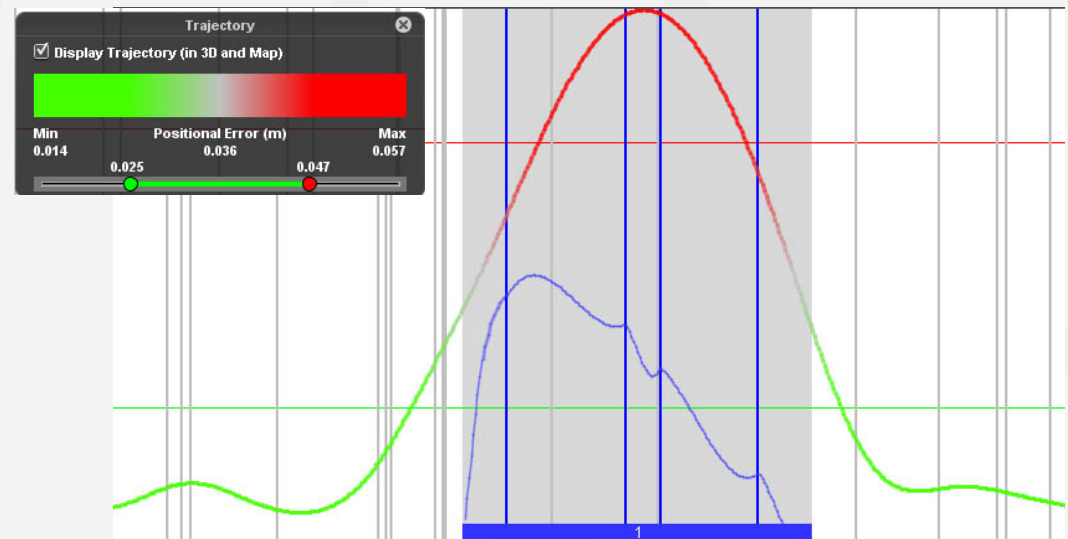
- Load & List GCPoints
- Visualize
 - on map
 - on imagery
 - in pointcloud
- Measure differences
 - in any view
 - accept as constraints
- Check with any reference and MM data
- Report



Content Manager - Trajectory Adjustment

Correct Positional Accuracy

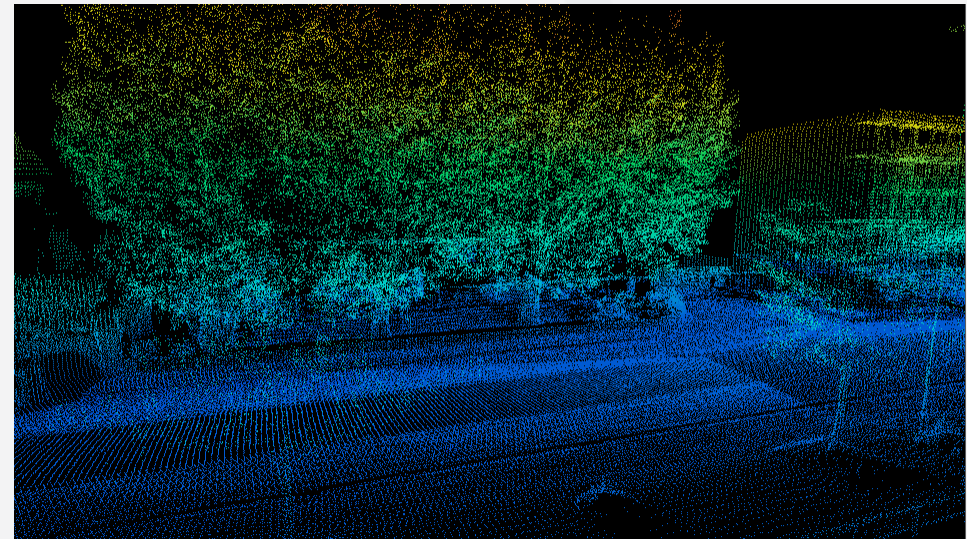
- Interpretation & Judgement
 - ▶ Display GPS Error over time
 - ▶ Graph representation
 - ▶ Measure and Display Constraints
- Adjust or Remove Trajectory
 - ▶ Select part to Adjust or Remove
 - ▶ Preview and Process Adjustment
 - ▶ Do Multiple Stretches
 - ▶ Remove Multiple Passes



Content Manager - Consolidate

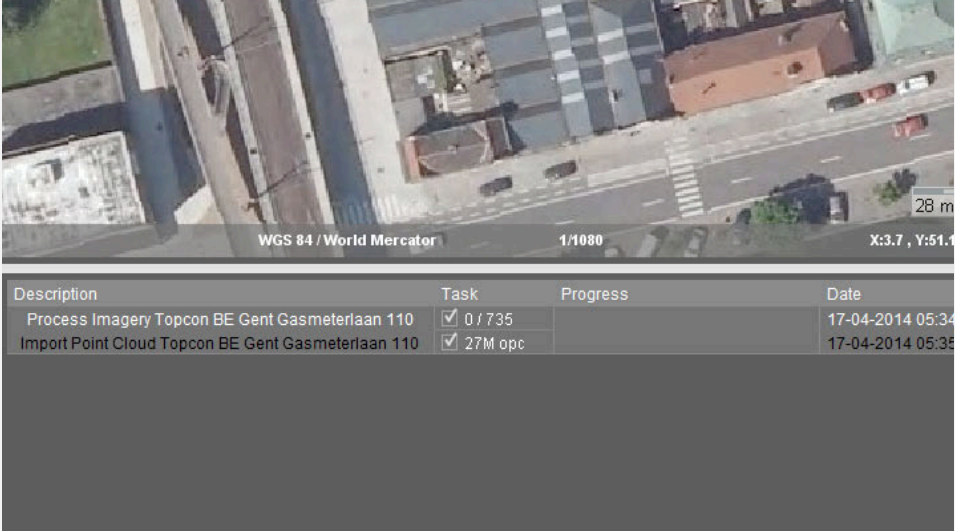
Get ready for next phase, feature extraction

- Reprocess Runs & Projects
 - cleaned pointcloud
 - corrected trajectory
 - removed multiple passes
- Stores as clean and new run
- Delivery :
 - Combine (portions of) runs / project into a single “delivery run”



Content Manager - Extra Tools

- Task Manager Utility
 - ▶ List Jobs To Do
 - ▶ Select and Process at night
 - ▶ Review
- Export
- Movie Maker



The screenshot displays a 3D aerial view of a street scene with buildings and cars. Below the view, a table lists tasks with their progress and dates.

Description	Task	Progress	Date
Process Imagery Topcon BE Gent Gasmeterlaan 110	<input checked="" type="checkbox"/> 0 / 735		17-04-2014 05:34
Import Point Cloud Topcon BE Gent Gasmeterlaan 110	<input checked="" type="checkbox"/> 27M opc		17-04-2014 05:35

FEATURE EXTRACTION

FOR
DATA PRODUCTION, ANALYSIS



The Life of Mobile Mapping data



Feature Extraction products

Overview

- Basic Edition
- Extensions to Basic Edition:
 - ▶ Asset Inventory
 - ▶ Clearance, Collision, Clash
 - ▶ Profiles & Cross Sections
 - ▶ Volumetric Analysis
 - ▶ Face & Plate detection
 - ▶ Blur & Erase QC

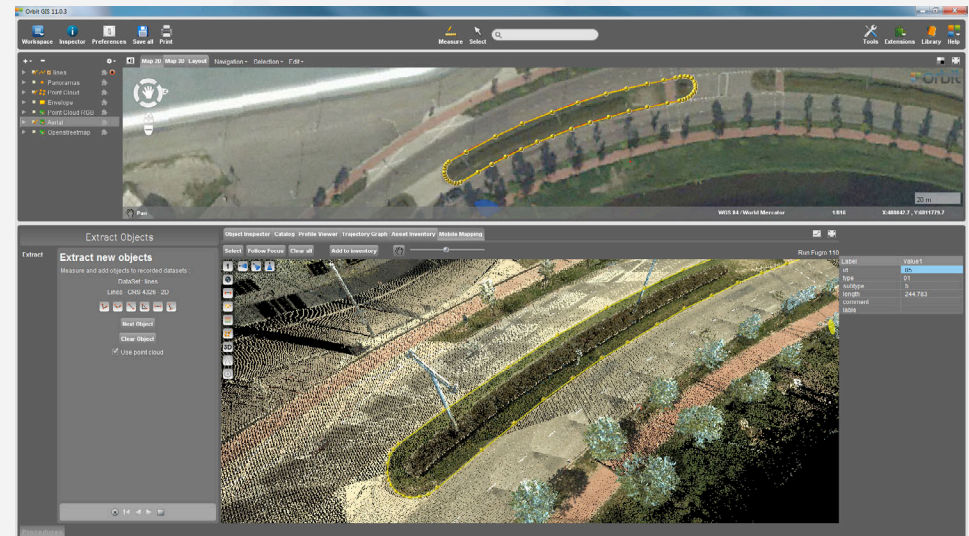
- Desktop products, available in
 - ▶ stand-alone
 - ▶ client-server



Feature Extraction - Basic Edition

Entry level - manual extraction - get started

- Entry Level
- Open Runs & Projects
- Simple Measurement Procedures
- Measure in Image, Point Cloud
- Measure Point, Line, Area
 - ▶ Display in CRS, WGS84, Lat/Lon
 - ▶ Display Slope, Height, ...
- Manual Attribution to any dataset

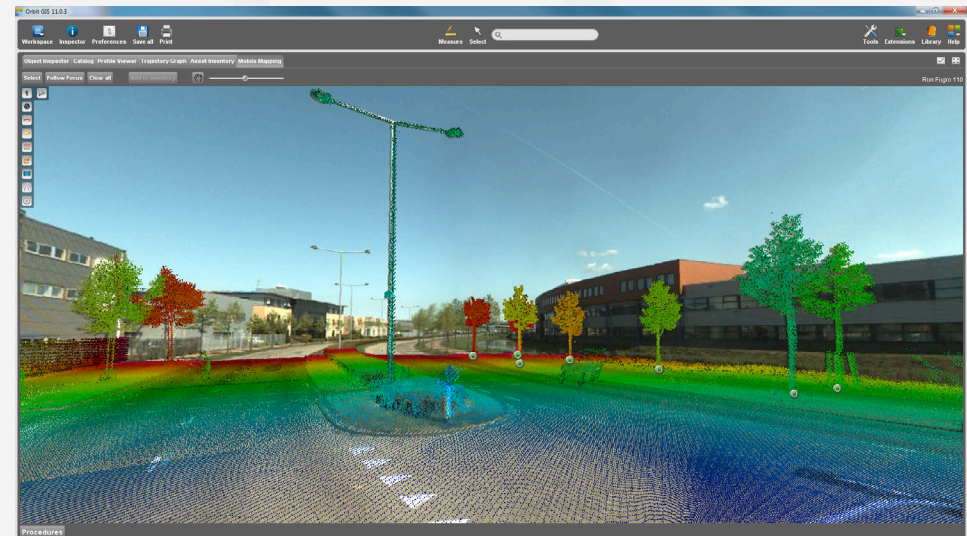


This product is the upgrade to the v10.5 "Manager" product

Feature Extraction - Asset Inventory

Advanced Workflow Asset Extraction & Storage

- Use Workflows
- Design Themes
- Share data
- Store in Database
- Add Snapshots, documents, attributes
- Additional Measurement functions

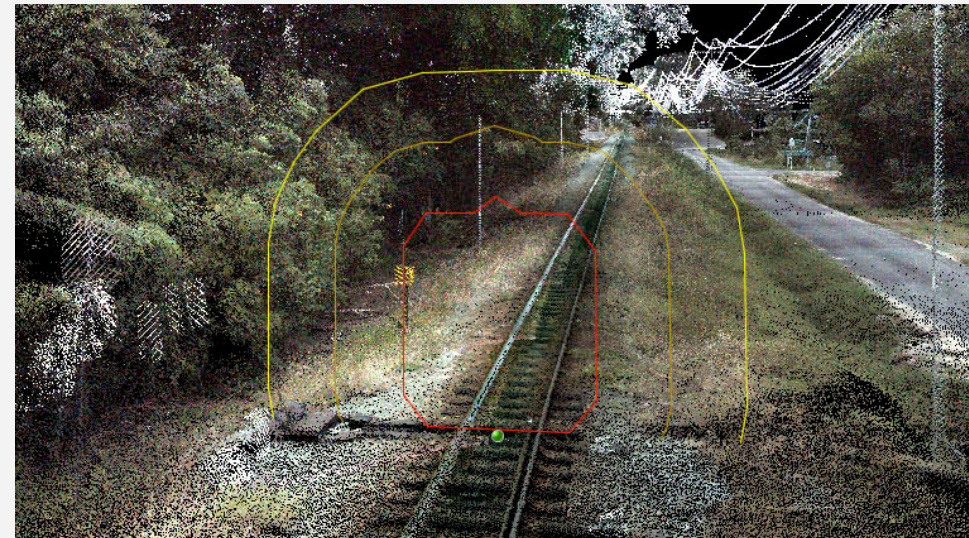


This is an Extension which requires 'Feature Extraction - Basic' to operate. Also available in bundles - see further.

Feature Extraction - Collisions & Clearance

Clash Detection & Clearance Measurements

- Any 3D Path
 - supports railroad slant
- Any Form
- Autodetect Hits
 - register Near-Hits, Watch list
- Report
- Judge & Act

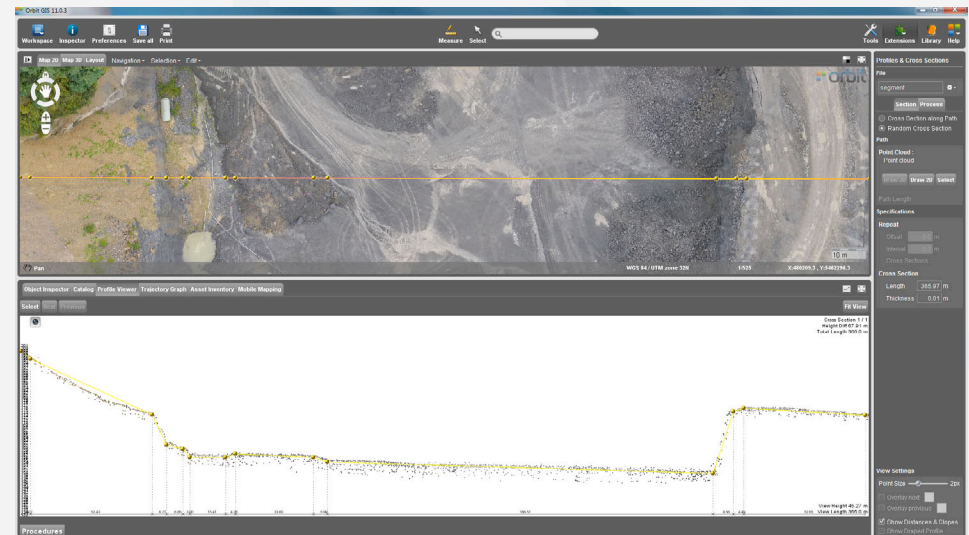


This is an Extension which requires 'Feature Extraction - Basic' to operate. Also available in bundle - see further.

Feature Extraction - Profiles

Automated Cross Sections & Reusable Profiles

- Various Profiles
 - ▶ Path with Cross Sections
 - ▶ Single Profile
 - ▶ Set Profile length & width
- Isometric View
- Register Themes
 - ▶ Integrated with Asset Inventory
- Register Tech Profile
- Delivery

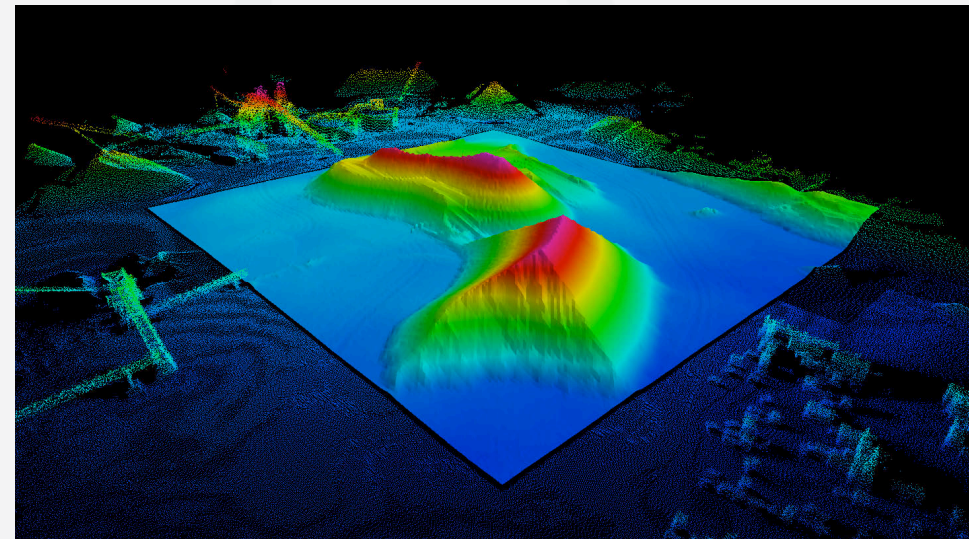


This is an Extension which requires 'Feature Extraction - Basic' to operate. Also available in bundle - see further.

Feature Extraction - Volumetric Analysis

Any Volume and Volume Comparison

- Use any 3D Datasource
- Set Fence as perimeter
- Use Reference Data
 To Compare
- Calculate Cut & Fill
- Delivery
 Creates DEM / TIN
 Creates Contour Lines



This is an Extension which requires 'Feature Extraction - Basic' to operate. Also available in bundle - see further.

Feature Extraction - Detection & Blurring

Autodetect, QA and QC Blur & Erase areas, update & deliver

- Automated Detection
 - ▶ Face detection engine
 - ▶ Plate detection engine
- Metadata
- Blur & Erase Editor
 - ▶ Simulate
 - ▶ Process Imagery
 - ▶ Deliver



This are two Extensions which require 'Feature Extraction - Basic' to operate. Also available in bundle - see further.

Feature Production teams

Maximize production with central data storage in Client-Server setup

■ Stand-Alone

- ▶ All Extensions available
- ▶ Manual Mgmt of data

■ Client-Server

- ▶ All Extensions available
- ▶ Central Management of
 - Mobile Mapping data
 - Users & Permissions
 - Workspaces
 - Asset Inventory Database

excludes Face & Plate detection

Bundled products

Asset Inventory and Feature Extraction bundles

■ Asset Inventory bundle

includes :

- ▶ Feature Extraction (base)
- ▶ Asset Inventory (extension)

This product is the upgrade to the v10.5 "AIM3" product

■ Feature Extraction bundle

includes:

- ▶ Feature Extraction (base)
- ▶ Asset Inventory (extension)
- ▶ Clearance (extension)
- ▶ Profiles (extension)
- ▶ Volumes (extension)
- ▶ Blur & Erase QC (extension)

does not include Face & Plate detection

Bundled products

Full Office bundle

- Full Office bundle
 - includes :*
 - ▶ Content Manager
 - ▶ Feature Extraction bundle

does not include Face & Plate detection



Orbit MM Explorer

Desktop Content Viewer tool

- Views all imported MM data
- Same engine and GUI
 - ▶ Easy to use
 - ▶ All visualization options
 - ▶ All measure tools
- No registration / extraction / editing
- Tool to ship with **prepared** content

- Single Desktop product, available in stand-alone only



PUBLISHER

**FOR
SHARING OF MOBILE MAPPING DATA**



The Life of Mobile Mapping data



Publisher products

Overview

- Mobile Mapping Publisher
 - includes Browser Publishing
- iOS App
- SDK with 3 API's
- Plugins for
 - Esri ArcGIS for Desktop
 - Esri ArcServer using GeoCortex
 - Esri ArcOnline (App)
 - AutoDesk AutoCAD Map 2014*
 - Integrgraph GeoMedia 2014*
 - Bentley MicroStation*
 - SmallWorld*

Mobile Mapping Publisher

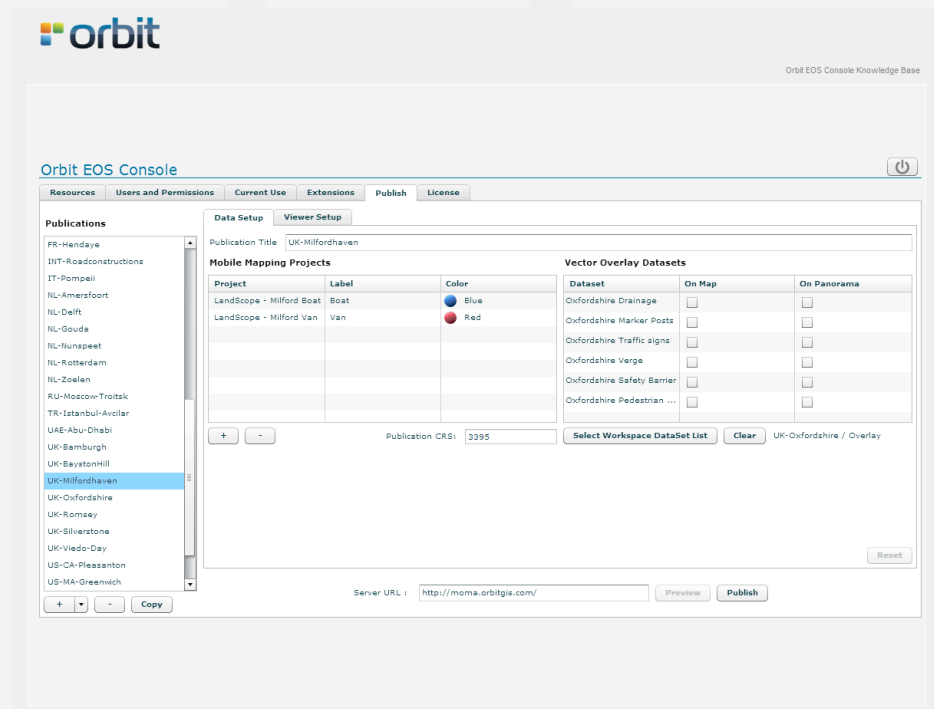
Publisher Features

- Main Features :
 - Unlimited Image & LiDAR data
 - Manage Projects & Publications
 - Manage Users & Permissions
 - Real-Time Blurring
 - Include basemaps and vector data
- Publish Mobile Mapping data to :
 - Browser
 - Mobile Device
 - SDK
 - Integrated Solutions

Mobile Mapping Publisher

Manage Projects and Publications

- Console and Administrator Tools
 - Includes Desktop Catalog tool
- Setup Publications
 - Streetlevel content
 - Basemap content
 - Extracted features
 - User Credentials & Permissions
 - Logging
- Client Authorization

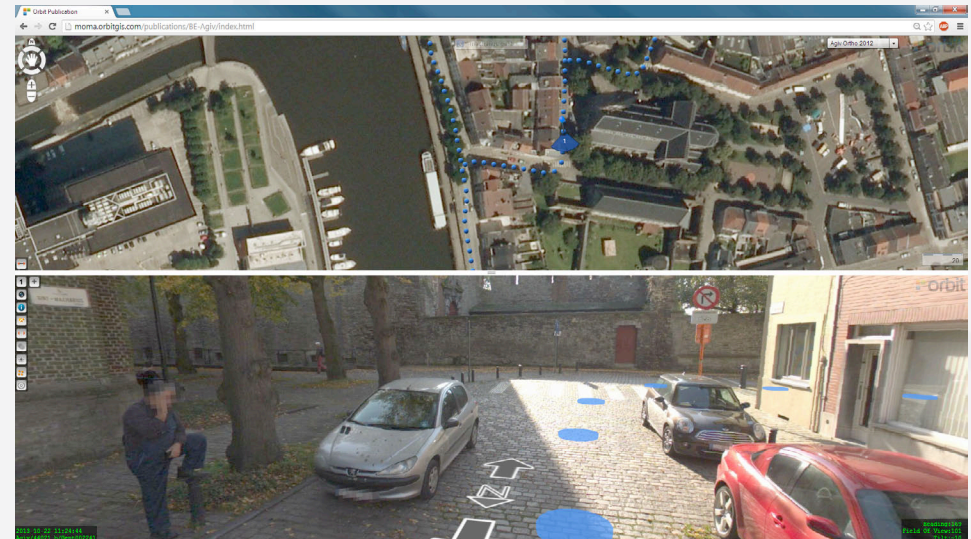


Mobile Mapping Publisher - Blurring

Comply with Privacy Legislation

- Publish Blurred and/or Original images
- Blur on-the-fly
 - to save disc space for imagery
- Includes Privacy Issue Reporting tool
 - with citizen feedback to Blurring QC tool

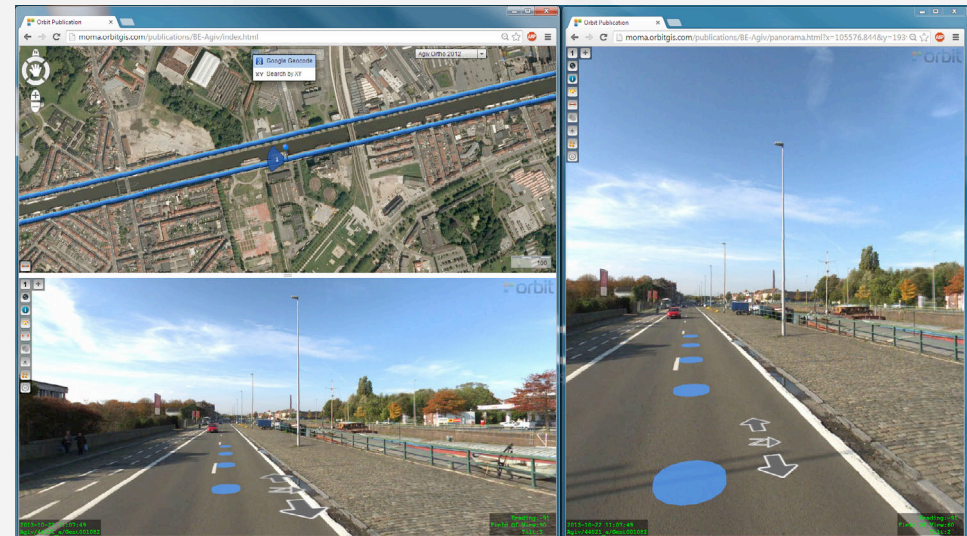
portions to be blurred must be defined using the Feature Extraction blurring tools



Publish to : Browser

Browser solution Features

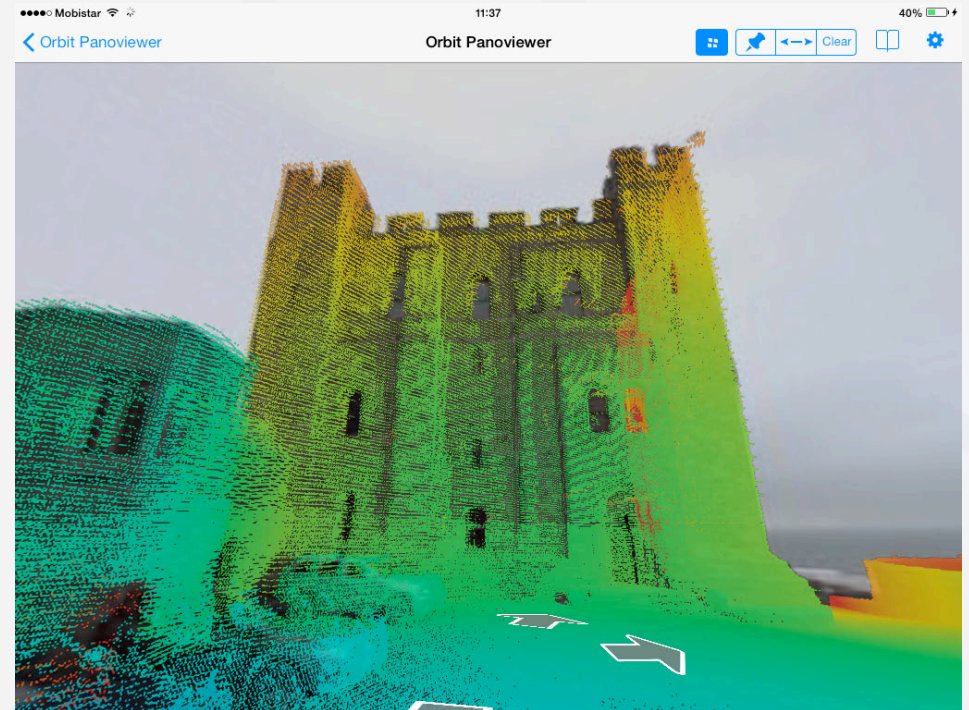
- Spherical Imagery as primary User Interface content
- Various Web Page Templates
- Open using URL by XY, Photo name
- Configurable Search
- User Credentials, Permissions
- Use Log



Publish to : Mobile Devices

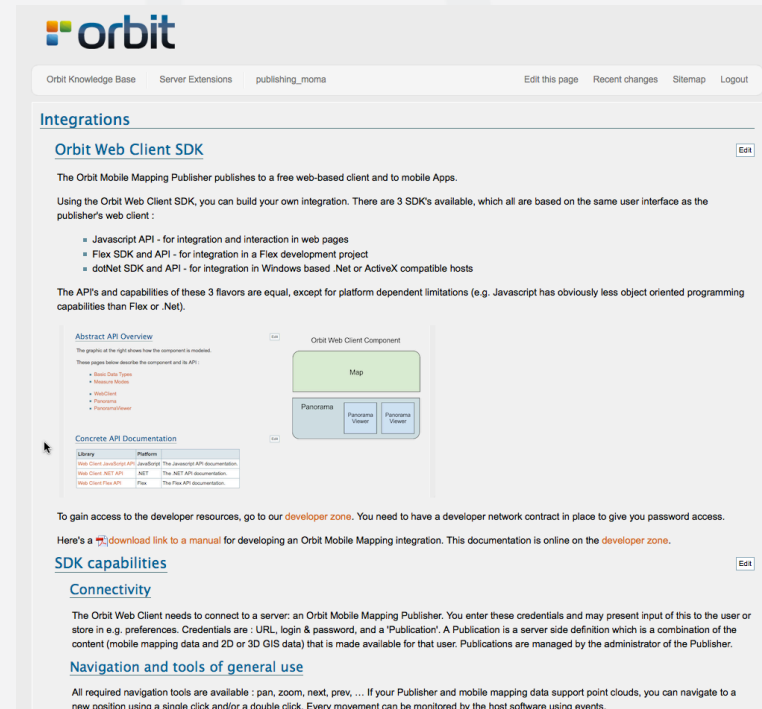
free iOS App

- App Store “PanoViewer”
- Connect to any Publisher
 - Store login credentials
 - Native support for earthmine, Cyclomedia
- Search or Point on map
 - Photo recording positions overlay on map
- Open Spherical image
 - Natural Pan & Zoom
- On Image :
 - Point & Distance Measurement
 - LiDAR overlay



Publish to : SDK & Developer tools

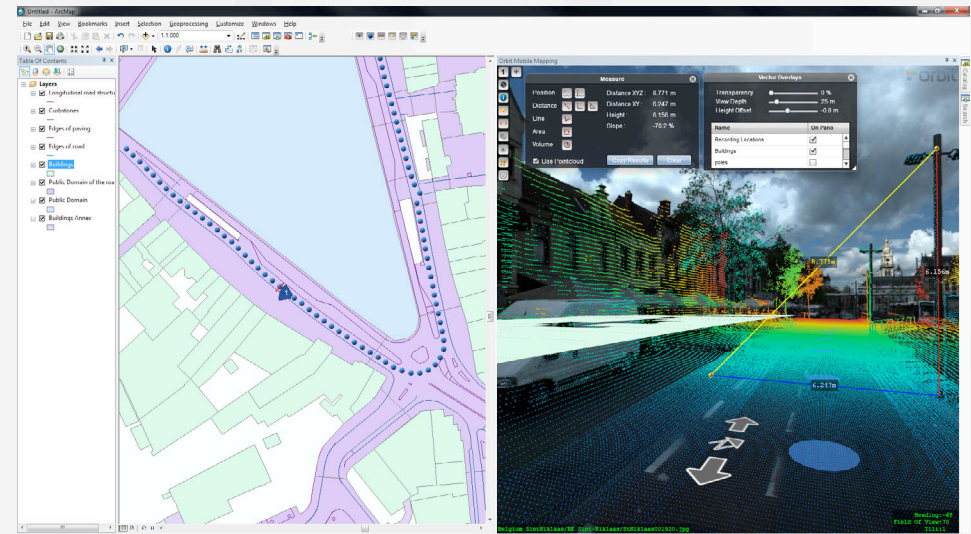
- 1 SDK, 3 API's
 - JavaScript
 - Flex
 - dotNet
- Online Documentation
 - password protected
- Developer Services
 - Dev/Test server
 - Translations
 - Product & Sales Authorization



The screenshot shows the Orbit Web Client SDK documentation page. The page title is "Integrations" and the sub-section is "Orbit Web Client SDK". The text describes the SDK and lists three available SDKs: JavaScript API, Flex SDK and API, and dotNet SDK and API. It also includes an "Abstract API Overview" section with a diagram of the "Orbit Web Client Component" showing a "Map" component and three "Panorama Viewer" components. Below the diagram is a "Concrete API Documentation" table with columns for "Library" and "Platform". The table lists three entries: "Orbit Client (mobile/web) API" for JavaScript, "Orbit Client (NET) API" for .NET, and "Orbit Client (Flex) API" for Flex. The page also includes sections for "SDK capabilities", "Connectivity", and "Navigation and tools of general use".

Publish to : Integration products

- Available (sept 2014) :
 - ArcGIS 10.x
 - ArcGIS for Server 10.x
 - using Latitude GeoCortex
 - ArcGIS Online
- In development (sept 2014) :
 - AutoCAD Map 2014
 - MicroStation 2014
 - GeoMedia 2014
 - Smallworld



Publisher - Product Variations

- **Functionality**
 - ▶ Publish Imagery Only
upgrade possible
 - ▶ Publish for Intranet Only
upgrade possible
- **Server options**
 - ▶ Additional Server Cores
starts from 4-core server
 - ▶ Load Balancing (extra servers)
 - ▶ Backup/Recovery Server
 - ▶ Testing Server

Publisher - Hosting Solutions

- What ?
 - Setup your own Publisher to host MM data for your customers
 - or Use Orbit GT's hosting service to get started
- Who ?
 - Service and Data providers
 - Anyone who has MM data to share or to sell
 - Anyone who wants to help out the customer on IT challenges
- Why ?
 - It's efficient for your current customers
 - There are customers you haven't met yet looking for your data

Thank you

More info : www.orbitgt.com

© Orbit GT, 2014

