

Everything Mobile Mapping

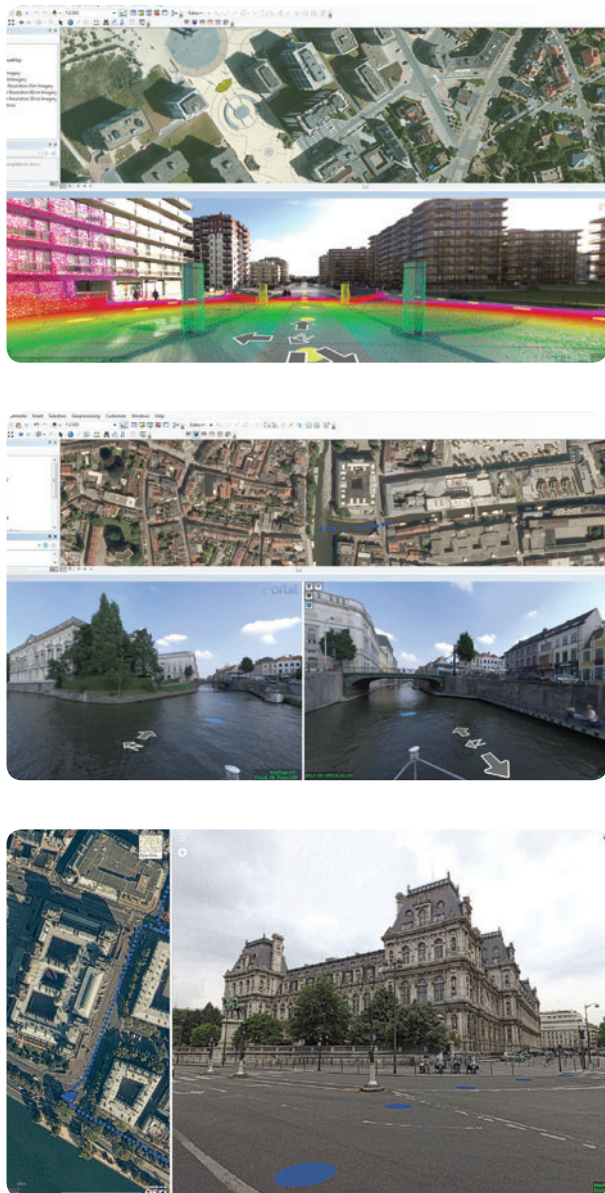
Streetlevel Imagery and Point Cloud
Integrated in ArcGIS[®], ArcGIS for Server,
ArcGISSM Online



Orbit Mobile Mapping for the Esri Platform

The Orbit Mobile Mapping add-in gives access to Mobile Mapping content of every type and content producer, right into your GIS. The portfolio supports all data seamlessly, all types of 360° and planar imagery and point clouds, with fast access to petabytes of data.

Orbit GT's plugin for the Esri platform grants access to this data for each single user opening new capabilities for consulting, viewing, measurements and registration of new objects and overlaying your own data. A must-have for every up-to-date ArcGIS user.



Data © Topcon, Orbit GT, Teccon

Plug-In for ArcMap

The Orbit Mobile Mapping plugin for ArcGIS for Desktop comes as a standard Esri "Add-In" file. Download, install and run - it's that easy. Enable the Add-In using your Activation Key. Now connect to an Orbit Mobile Mapping Publisher, enter your login credentials and you're all set to go.

ArcMap™ shows the recording locations of all photo's taken. Click on a point to open that panoramic image. You can open up to 4 images at any one time and order the windows vertically, horizontally or tiled. Navigation is intuitive and fast. Move to the next image with a simple double click.

Measure, Register, Overlay

The Add-In enables methods to measure objects, points, lines and areas in one or two images. A measurement in one image uses the mobile mapping point cloud which resides on the server. If no point cloud is available, you make measurements in 2 images using triangulation. Any measurement can be registered as a new object/feature and saved into a layer of your choice, completed with attribution within ArcMap.

Any vector layer from your TOC (table of contents) can be superimposed on the 360° image. When your data is 2D, simply adjust the height with a slider. Finally, take a snapshot for documentation or print.

ArcGIS portfolio support

Similar plugins are available for ArcGIS Pro, ArcGIS for Server, ArcGIS Online and ArcGIS Explorer. Look for our Apps on the ArcGIS Online Marketplace !

One solution, Smart choice

The Orbit portfolio for Mobile Mapping is arguably the most comprehensive available. It supports all types of data and caption systems, is capable of working with massive volumes of data, and is perfectly integrated. One solution to cover all.



ORBIT GeoSpatial Technologies

Industriepark E17, 2021 - Scherpeputstraat 14 9160 Lokeren Belgium
Tel +32 9 340 5757 Fax +32 9 340 5750 info@orbitgt.com

www.orbitgt.com

Enterprise VAT BE 0412.104.993 RPR Dendermonde
Bank Account: KREDBEBB - BE57 7330 1675 2435